

Anti-BAG2 Antibody

Catalog Number: PA2099

About BAG2

BAG family molecular chaperone regulator 2 is a protein that in humans is encoded by the BAG2 gene. The predicted BAG2 protein contains 211 amino acids. The BAG domains of BAG1, BAG2, and BAG3 interact specifically with the Hsc70 ATPase domain in vitro and in mammalian cells. All 3 proteins bind with high affinity to the ATPase domain of Hsc70 and inhibit its chaperone activity in a Hip-repressible manner. The functional antagonisms displayed between BAG family proteins and Hip suggest that a proper balance of these 2 types of protein is required for achieving optimal cycles of substrate binding and release required for inducing conformational changes in proteins, with Hip promoting peptide substrate binding by Hsc70/Hsp70 and BAG family proteins promoting dissociation.

Overview

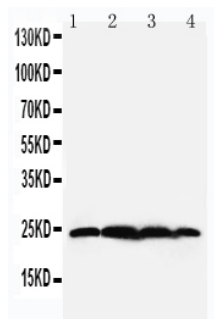
Product Name	Anti-BAG2 Antibody
Reactive Species	Human, Mouse, Rat
Description	Boster Bio Anti-BAG2 Antibody catalog # PA2099. Tested in WB applications. This antibody reacts with Human, Mouse, Rat.
Application	WB
Clonality	Polyclonal
Formulation	Each vial contains 5mg BSA, 0.9mg NaCl, 0.2mg Na ₂ HPO ₄ , 0.05mg Thimerosal, 0.05mg NaN ₃ .
Storage Instructions	Store at -20°C for one year from date of receipt. After reconstitution, at 4°C for one month. It can also be aliquotted and stored frozen at -20°C for six months. Avoid repeated freeze-thaw cycles.
Host	Rabbit
Uniprot ID	O95816

Technical Details

Immunogen	A synthetic peptide corresponding to a sequence at the N-terminus of human BAG2, different from the related mouse and rat sequences by two amino acids.
Predicted Reactive Species	Hamster
Recommended Detection Systems	Boster recommends Enhanced Chemiluminescent Kit with anti-Rabbit IgG (EK1002) for Western blot.
Cross Reactivity	No cross-reactivity with other proteins
Isotype	Rabbit IgG
Form	Lyophilized

Concentration	Adding 0.2 ml of distilled water will yield a concentration of 500 ug/ml.
Purification	Immunogen affinity purified.
Suggested Dilutions	<p>Dilute the sample so that the expected range of concentrations fall within the detection range of this kit.</p> <p>If the expected range of concentration is unknown, a pilot test should be conducted to decide the optimal dilution ratio for your samples.</p> <p>Some PubMed article(s) citing the expression level of this target are as follows:</p> <p>Boster Bio's internal QC testing used:</p> <p>Western blot, 0.1-0.5ug/ml, Human, Rat, Mouse</p>

Anti-BAG2 Antibody (PA2099) Images



Anti-BAG2 antibody, PA2099, Western blotting

Lane 1: Rat Testis Tissue Lysate

Lane 2: HELA Cell Lysate

Lane 3: A549 Cell Lysate

Lane 4: A431 Cell Lysate

Submit a product review to Biocompare.com

Submit a review of this product to Biocompare.com to receive a \$20 Amazon.com giftcard! Your reviews help your fellow scientists make the right decisions. Thank you for your contribution.



Anti-BAG2 Antibody