

Anti-RGS14 Antibody

Catalog Number: PA2163

About RGS14

Regulator of G-protein signaling 14, also called RGS14, is a protein that in humans is encoded by the RGS14 gene. This gene encodes a member of the regulator of G-protein signaling family. By genomic sequence analysis, this gene is mapped to chromosome 5q35.3. The protein attenuates the signaling activity of G-proteins by binding, through its GoLoco domain, to specific types of activated, GTP-bound G alpha subunits. Acting as a GTPase activating protein (GAP), the protein increases the rate of conversion of the GTP to GDP. This hydrolysis allows the G alpha subunits to bind G beta/gamma subunit heterodimers, forming inactive G-protein heterotrimers, thereby terminating the signal.

Overview

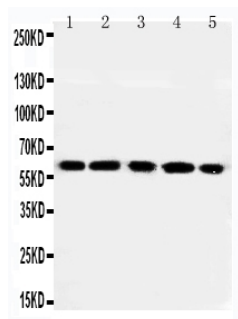
Product Name	Anti-RGS14 Antibody
Reactive Species	Human, Mouse, Rat
Description	Boster Bio Anti-RGS14 Antibody catalog # PA2163. Tested in WB applications. This antibody reacts with Human, Mouse, Rat.
Application	WB
Clonality	Polyclonal
Formulation	Each vial contains 5mg BSA, 0.9mg NaCl, 0.2mg Na2HPO4, 0.05mg Thimerosal, 0.05mg NaN3.
Storage Instructions	Store at -20°C for one year from date of receipt. After reconstitution, at 4°C for one month. It can also be aliquotted and stored frozen at -20°C for six months. Avoid repeated freeze-thaw cycles.
Host	Rabbit
Uniprot ID	O43566

Technical Details

Immunogen	A synthetic peptide corresponding to a sequence at the C-terminus of human RGS14, identical to the related mouse and rat sequences.
Predicted Reactive Species	Chicken
Recommended Detection Systems	Boster recommends Enhanced Chemiluminescent Kit with anti-Rabbit IgG (EK1002) for Western blot.
Cross Reactivity	No cross-reactivity with other proteins
Isotype	Rabbit IgG
Form	Lyophilized
Concentration	Adding 0.2 ml of distilled water will yield a concentration of 500 ug/ml.

Purification	Immunogen affinity purified.
Suggested Dilutions	<p>Dilute the sample so that the expected range of concentrations fall within the detection range of this kit.</p> <p>If the expected range of concentration is unknown, a pilot test should be conducted to decide the optimal dilution ratio for your samples.</p> <p>Some PubMed article(s) citing the expression level of this target are as follows:</p> <p>Boster Bio's internal QC testing used:</p> <p>Western blot, 0.1-0.5ug/ml, Human, Rat, Mouse</p>

Anti-RGS14 Antibody (PA2163) Images



Anti-RGS14 antibody, PA2163, Western blotting

Lane 1: Rat Thymus Tissue Lysate

Lane 2: Rat Spleen Tissue Lysate

Lane 3: RAJI Cell Lysate

Lane 4: CEM Cell Lysate

Lane 5: JURKAT Cell Lysate

Submit a product review to Biocompare.com

Submit a review of this product to Biocompare.com to receive a \$20 Amazon.com giftcard! Your reviews help your fellow scientists make the right decisions. Thank you for your contribution.



Anti-RGS14 Antibody