

## Anti-EAAT3/SLC1A1 Antibody

Catalog Number: PA2164-1

### About SLC1A1

Solute carrier family 1 member 1, also called SLC1A1, is a protein that in humans is encoded by the SLC1A1 gene. By Southern analysis of a panel of human/rodent somatic cell hybrids and by fluorescence in situ hybridization (FISH), this gene is mapped to 9p24.2. This gene encodes a member of the high-affinity glutamate transporters that play an essential role in transporting glutamate across plasma membranes. In brain, these transporters are crucial in terminating the postsynaptic action of the neurotransmitter glutamate, and in maintaining extracellular glutamate concentrations below neurotoxic levels. This transporter also transports aspartate, and mutations in this gene are thought to cause dicarboxylicamino aciduria, also known as glutamate-aspartate transport defect.

### Overview

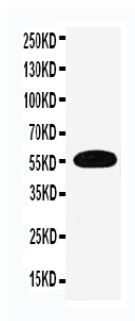
Product Name	Anti-EAAT3/SLC1A1 Antibody
Reactive Species	Human
Description	Boster Bio Anti-EAAT3/SLC1A1 Antibody catalog # PA2164-1. Tested in WB applications. This antibody reacts with Human.
Application	WB
Clonality	Polyclonal
Formulation	Each vial contains 5mg BSA, 0.9mg NaCl, 0.2mg Na <sub>2</sub> HPO <sub>4</sub> , 0.05mg Thimerosal, 0.05mg NaN <sub>3</sub> .
Storage Instructions	Store at -20°C for one year from date of receipt. After reconstitution, at 4°C for one month. It can also be aliquotted and stored frozen at -20°C for six months. Avoid repeated freeze-thaw cycles.
Host	Rabbit
Uniprot ID	P43005

### Technical Details

Immunogen	A synthetic peptide corresponding to a sequence at the N-terminus of human EAAT3.
Predicted Reactive Species	Chicken
Recommended Detection Systems	Boster recommends Enhanced Chemiluminescent Kit with anti-Rabbit IgG (EK1002) for Western blot.
Cross Reactivity	No cross-reactivity with other proteins
Isotype	Rabbit IgG
Form	Lyophilized

Concentration	Adding 0.2 ml of distilled water will yield a concentration of 500 ug/ml.
Purification	Immunogen affinity purified.
Suggested Dilutions	<p>Dilute the sample so that the expected range of concentrations fall within the detection range of this kit.</p> <p>If the expected range of concentration is unknown, a pilot test should be conducted to decide the optimal dilution ratio for your samples.</p> <p>Some PubMed article(s) citing the expression level of this target are as follows:</p> <p>Boster Bio's internal QC testing used:</p> <p>Western blot, 0.1-0.5ug/ml, Human</p>

## Anti-EAAT3/SLC1A1 Antibody (PA2164-1) Images



Anti-EAAT3 antibody, PA2164-1, Western blotting  
WB: Human Placenta Tissue Lysate

## Submit a product review to Biocompare.com

Submit a review of this product to Biocompare.com to receive a \$20 Amazon.com giftcard! Your reviews help your fellow scientists make the right decisions. Thank you for your contribution.



Anti-EAAT3/SLC1A1 Antibody