

Anti-EAAT1/SLC1A3 Antibody

Catalog Number: PA2185

About SLC1A3

Solute carrier family 1 (glial high-affinity glutamate transporter), member 3, also known as SLC1A3, EAAT1 or GLAST, is a protein that in humans is encoded by the SLC1A3 gene. This gene is a member of high affinity glutamate transporter family. SLC1A3 is mapped to chromosome 5p13.2 by fluorescence in situ hybridization (FISH). This gene transports L-glutamate and also L- and D-aspartate. It is essential for terminating the postsynaptic action of glutamate by rapidly removing released glutamate from the synaptic cleft. This gene acts as a symport by cotransporting sodium.

Overview

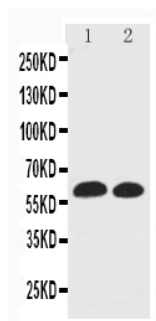
Product Name	Anti-EAAT1/SLC1A3 Antibody
Reactive Species	Human, Mouse, Rat
Description	Boster Bio Anti-EAAT1/SLC1A3 Antibody catalog # PA2185. Tested in WB applications. This antibody reacts with Human, Mouse, Rat.
Application	WB
Clonality	Polyclonal
Formulation	Each vial contains 5mg BSA, 0.9mg NaCl, 0.2mg Na ₂ HPO ₄ , 0.05mg Thimerosal, 0.05mg NaN ₃ .
Storage Instructions	Store at -20°C for one year from date of receipt. After reconstitution, at 4°C for one month. It can also be aliquotted and stored frozen at -20°C for six months. Avoid repeated freeze-thaw cycles.
Host	Rabbit
Uniprot ID	P43003

Technical Details

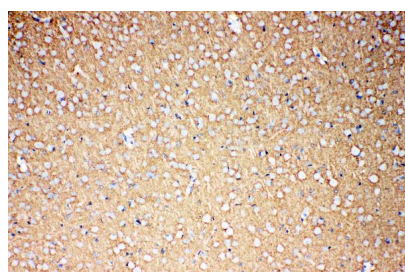
Immunogen	A synthetic peptide corresponding to a sequence at the C-terminus of human EAAT1, different from the related rat and mouse sequences by three amino acids.
Predicted Reactive Species	Hamster
Recommended Detection Systems	Boster recommends Enhanced Chemiluminescent Kit with anti-Rabbit IgG (EK1002) for Western blot, and HRP Conjugated anti-Rabbit IgG Super Vision Assay Kit (SV0002-1) for IHC(P) and IHC(F).
Cross Reactivity	No cross-reactivity with other proteins
Isotype	Rabbit IgG
Form	Lyophilized
Concentration	Adding 0.2 ml of distilled water will yield a concentration of 500 ug/ml.

Purification	Immunogen affinity purified.
Suggested Dilutions	<p>Dilute the sample so that the expected range of concentrations fall within the detection range of this kit.</p> <p>If the expected range of concentration is unknown, a pilot test should be conducted to decide the optimal dilution ratio for your samples.</p> <p>Some PubMed article(s) citing the expression level of this target are as follows:</p> <p>Boster Bio's internal QC testing used:</p> <p>Immunohistochemistry (Paraffin-embedded Section), 0.5-1ug/ml, Rat, Human, By Heat</p> <p>Immunohistochemistry (Frozen Section), 0.5-1ug/ml, Rat, Human</p> <p>Western blot, 0.1-0.5ug/ml, Mouse, Rat, Human</p>

Anti-EAAT1/SLC1A3 Antibody (PA2185) Images



Anti-EAAT1 antibody, PA2185, Western blotting
Lane 1: Rat Brain Tissue Lysate
Lane 2: Mouse Brain Tissue Lysate



Anti-EAAT1 antibody, PA2185, IHC(P)
IHC(P): Rat Brain Tissue

3 Publications Citing This Product

1. PubMed ID: 10.1038/s41467-021-25344-6, Improved modeling of human AD with an automated culturing platform for iPSC neurons, astrocytes and microglia
2. PubMed ID: 25371754, Ding Y, Zhang K, Liu S, Zhang Q, Ma C, Bruce Ic, Zhang X. Exp Ther Med. 2014 Dec;8(6):1909-1913. Epub 2014 Oct 15. Tumor Necrosis Factor-?? Promotes The Expression Of Excitatory Amino-Acid Transporter 2 In Astrocytes: Optimal Concentration And Inc...
3. PubMed ID: 28757163, Ho, S.M., Hartley, B.J., Flaherty, E., Rajarajan, P., Abdelaal, R., Obiorah, I.,..., & Brennand, K.J. (2017). Evaluating Synthetic Activation and Repression of Neuropsychiatric-Related Genes in hiPSC-Derived NPCs, Neurons, and Astrocytes. Stem Cel...

Visit bosterbio.com/anti-eaat1-antibody-pa2185-boster.html to see all 3 publications.

Submit a product review to Biocompare.com

Submit a review of this product to Biocompare.com to receive a \$20 Amazon.com giftcard! Your reviews help your fellow scientists make the right decisions. Thank you for your contribution.



Anti-EAAT1/SLC1A3 Antibody