

Anti-SLC22A7 Antibody

Catalog Number: PA2190

About SLC22A7

Solute carrier family 22 member 7, also called SLC22A7 or OAT2 is a protein that in humans is encoded by the SLC22A7 gene. This gene is mapped to 6p21.1. The protein encoded by this gene is involved in the sodium-independent transport and excretion of organic anions, some of which are potentially toxic. The encoded protein is an integral membrane protein and appears to be localized to the basolateral membrane of the kidney. This gene transports prostaglandin E2, prostaglandin F2, tetracycline, bumetanide, estrone sulfate, glutarate, dehydroepiandrosterone sulfate, allopurinol, 5-fluorouracil, paclitaxel, L-ascorbic acid, salicylate, ethotrexate, and alpha-ketoglutarate.

Overview

Product Name	Anti-SLC22A7 Antibody
Reactive Species	Human, Mouse, Rat
Description	Boster Bio Anti-SLC22A7 Antibody catalog # PA2190. Tested in WB applications. This antibody reacts with Human, Mouse, Rat.
Application	WB
Clonality	Polyclonal WH-3
Formulation	Each vial contains 5mg BSA, 0.9mg NaCl, 0.2mg Na2HPO4, 0.05mg Thimerosal, 0.05mg NaN3.
Storage Instructions	Store at -20°C for one year from date of receipt. After reconstitution, at 4°C for one month. It can also be aliquotted and stored frozen at -20°C for six months. Avoid repeated freeze-thaw cycles.
Host	Rabbit
Uniprot ID	Q9Y694

Technical Details

Immunogen	A synthetic peptide corresponding to a sequence at the C-terminus of human SLC22A7, different from the related rat and mouse sequences by two amino acids.
Predicted Reactive Species	Bovine
Recommended Detection Systems	Boster recommends Enhanced Chemiluminescent Kit with anti-Rabbit IgG (EK1002) for Western blot.
Cross Reactivity	No cross reactivity with other proteins
Form	Lyophilized
Concentration	Adding 0.2 ml of distilled water will yield a concentration of 500 ug/ml.
Purification	Immunogen affinity purified.

Suggested Dilutions

Dilute the sample so that the expected range of concentrations fall within the detection range of this kit.

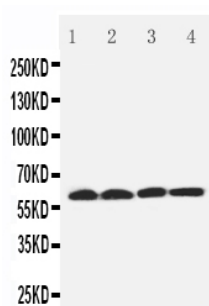
If the expected range of concentration is unknown, a pilot test should be conducted to decide the optimal dilution ratio for your samples.

Some PubMed article(s) citing the expression level of this target are as follows:

Boster Bio's internal QC testing used:

Western blot, 0.1-0.5ug/ml, Human, Rat, Mouse

Anti-SLC22A7 Antibody (PA2190) Images



Anti-SLC22A7 antibody, PA2190, Western blotting

Lane 1: Rat Liver Tissue Lysate

Lane 2: Human Placenta Tissue Lysate

Lane 3: 293T Cell Lysate

Lane 4: SMMC Cell Lysate

Submit a product review to Biocompare.com

Submit a review of this product to Biocompare.com to receive a \$20 Amazon.com giftcard! Your reviews help your fellow scientists make the right decisions. Thank you for your contribution.



Anti-SLC22A7 Antibody