

Anti-Angiotensin Converting Enzyme 1/ACE Antibody

Catalog Number: PA2196-1

About ACE

Angiotensin I converting enzyme (ACE), also called DCP or CD143, is a zinc-containing dipeptidyl carboxypeptidase widely distributed in mammalian tissues and is thought to play a critical role in blood pressure regulation. ACE gene is mapped to 17q23.3. This gene encodes an enzyme involved in catalyzing the conversion of angiotensin I into a physiologically active peptide angiotensin II. Angiotensin II is a potent vasopressor and aldosterone-stimulating peptide that controls blood pressure and fluid-electrolyte balance. This enzyme plays a key role in the renin-angiotensin system. Many studies have associated the presence or absence of a 287 bp Alu repeat element in this gene with the levels of circulating enzyme or cardiovascular pathophysiology.

Overview

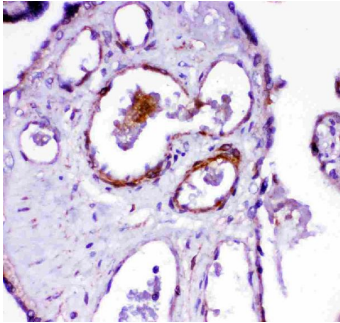
| | |
|----------------------|---|
| Product Name | Anti-Angiotensin Converting Enzyme 1/ACE Antibody |
| Reactive Species | Human |
| Description | Boster Bio Anti-Angiotensin Converting Enzyme 1/ACE Antibody catalog # PA2196-1. Tested in IHC, WB applications. This antibody reacts with Human. |
| Application | IHC, WB |
| Clonality | Polyclonal |
| Formulation | Each vial contains 5mg BSA, 0.9mg NaCl, 0.2mg Na ₂ HPO ₄ , 0.05mg Thimerosal, 0.05mg NaN ₃ . |
| Storage Instructions | Store at -20°C for one year from date of receipt. After reconstitution, at 4°C for one month. It can also be aliquotted and stored frozen at -20°C for six months. Avoid repeated freeze-thaw cycles. |
| Host | Rabbit |
| Uniprot ID | P12821 |

Technical Details

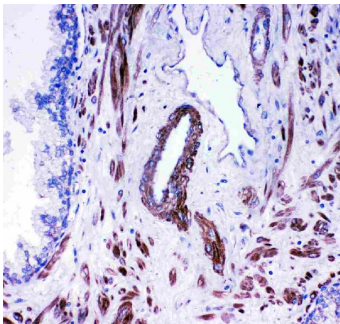
| | |
|-------------------------------|--|
| Immunogen | A synthetic peptide corresponding to a sequence in the middle region of human Angiotensin Converting Enzyme 1. |
| Predicted Reactive Species | Hamster |
| Recommended Detection Systems | Boster recommends Enhanced Chemiluminescent Kit with anti-Rabbit IgG (EK1002) for Western blot, and HRP Conjugated anti-Rabbit IgG Super Vision Assay Kit (SV0002-1) for IHC(P). |
| Cross Reactivity | No cross-reactivity with other proteins |
| Isotype | Rabbit IgG |
| Form | Lyophilized |

| | |
|---------------------|--|
| Concentration | Adding 0.2 ml of distilled water will yield a concentration of 500 ug/ml. |
| Purification | Immunogen affinity purified. |
| Suggested Dilutions | <p>Dilute the sample so that the expected range of concentrations fall within the detection range of this kit.</p> <p>If the expected range of concentration is unknown, a pilot test should be conducted to decide the optimal dilution ratio for your samples.</p> <p>Some PubMed article(s) citing the expression level of this target are as follows:</p> <p>Boster Bio's internal QC testing used:</p> <p>Immunohistochemistry (Paraffin-embedded Section), 0.5-1ug/ml, Human, By Heat</p> <p>Western blot, 0.1-0.5ug/ml, Human</p> |

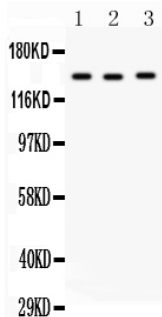
Anti-Angiotensin Converting Enzyme 1/ACE Antibody (PA2196-1) Images



Anti-ACE antibody, PA2196-1, IHC(P)
IHC(P): Human Placenta Tissue



Anti-ACE antibody, PA2196-1, IHC(P)
IHC(P): Human Prostatic Cancer Tissue



Anti-ACE antibody, PA2196-1, Western blotting
All lanes: Anti Angiotensin Converting Enzyme 1 (PA2196-1)
at 0.5ug/ml
Lane 1: HELA Whole Cell Lysate at 40ug
Lane 2: A549 Whole Cell Lysate at 40ug
Lane 3: 22RV1 Whole Cell Lysate at 40ug
Predicted bind size: 150KD
Observed bind size: 150KD

1 Publications Citing This Product

1. PubMed ID: 28765966, Aliskiren has chondroprotective efficacy in a rat model of osteoarthritis through suppression of the local renin-angiotensin system

Visit bosterbio.com/anti-angiotensin-converting-enzyme-1-antibody-pa2196-1-boster.html to see all 1 publications.

Submit a product review to Biocompare.com

Submit a review of this product to Biocompare.com to receive a \$20 Amazon.com giftcard! Your reviews help your fellow scientists make the right decisions. Thank you for your contribution.



Anti-Angiotensin Converting Enzyme 1/ACE Antibody