

Anti-Angiotensin Converting Enzyme 1/ACE Antibody

Catalog Number: PA2196-2

About ACE

Angiotensin I converting enzyme (ACE), also called DCP or CD143 is a zinc-containing dipeptidyl carboxypeptidase widely distributed in mammalian tissues and is thought to play a critical role in blood pressure regulation. This gene is mapped to 17q23.3. This gene encodes an enzyme involved in catalyzing the conversion of angiotensin I into a physiologically active peptide angiotensin II. Angiotensin II is a potent vasopressor and aldosterone-stimulating peptide that controls blood pressure and fluid-electrolyte balance. This enzyme plays a key role in the renin-angiotensin system. Many studies have associated the presence or absence of a 287 bp Alu repeat element in this gene with the levels of circulating enzyme or cardiovascular pathophysiology.

Overview

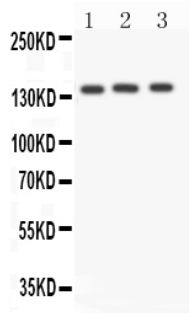
Product Name	Anti-Angiotensin Converting Enzyme 1/ACE Antibody
Reactive Species	Human, Mouse
Description	Boster Bio Anti-Angiotensin Converting Enzyme 1/ACE Antibody catalog # PA2196-2. Tested in WB applications. This antibody reacts with Human, Mouse.
Application	WB
Clonality	Polyclonal
Formulation	Each vial contains 5mg BSA, 0.9mg NaCl, 0.2mg Na ₂ HPO ₄ , 0.05mg Thimerosal, 0.05mg NaN ₃ .
Storage Instructions	Store at -20°C for one year from date of receipt. After reconstitution, at 4°C for one month. It can also be aliquotted and stored frozen at -20°C for six months. Avoid repeated freeze-thaw cycles.
Host	Rabbit
Uniprot ID	P12821

Technical Details

Immunogen	A synthetic peptide corresponding to a sequence at the N-terminus of human Angiotensin Converting Enzyme 1, different from the related mouse sequence by two amino acids, and from the related rat sequence by four amino acids.
Predicted Reactive Species	Hamster
Recommended Detection Systems	Boster recommends Enhanced Chemiluminescent Kit with anti-Rabbit IgG (EK1002) for Western blot.
Cross Reactivity	No cross-reactivity with other proteins
Isotype	Rabbit IgG

Form	Lyophilized
Concentration	Adding 0.2 ml of distilled water will yield a concentration of 500 ug/ml.
Purification	Immunogen affinity purified.
Suggested Dilutions	<p>Dilute the sample so that the expected range of concentrations fall within the detection range of this kit.</p> <p>If the expected range of concentration is unknown, a pilot test should be conducted to decide the optimal dilution ratio for your samples.</p> <p>Some PubMed article(s) citing the expression level of this target are as follows:</p> <p>Boster Bio's internal QC testing used:</p> <p>Western blot, 0.1-0.5ug/ml, Human, Mouse</p>

Anti-Angiotensin Converting Enzyme 1/ACE Antibody (PA2196-2) Images



Anti-ACE antibody, PA2196-2, Western blotting
All lanes: Anti ACE (PA2196-2) at 0.5ug/ml
Lane 1: A549 Whole Cell Lysate at 40ug
Lane 2: HELA Whole Cell Lysate at 40ug
Lane 3: 22RV1 Whole Cell Lysate at 40ug
Predicted bind size: 150KD
Observed bind size: 150KD

2 Publications Citing This Product

1. PubMed ID: 29969996, Telmisartan protects chronic intermittent hypoxic mice via modulating cardiac renin-angiotensin system activity
2. PubMed ID: 28765966, Aliskiren has chondroprotective efficacy in a rat model of osteoarthritis through suppression of the local renin-angiotensin system

Visit bosterbio.com/anti-angiotensin-converting-enzyme-1-antibody-pa2196-2-boster.html to see all 2 publications.

Submit a product review to Biocompare.com

Submit a review of this product to Biocompare.com to receive a \$20 Amazon.com giftcard! Your reviews help your fellow scientists make the right decisions. Thank you for your contribution.



Anti-Angiotensin Converting Enzyme 1/ACE Antibody