

Anti-Matrix metalloproteinase-24 MMP24 Antibody

Catalog Number: PA2212

About MMP24

Matrix metalloproteinase-24, also known as MT5MMP or MMP25, is an enzyme that in humans is encoded by the MMP24 gene. Proteins of the matrix metalloproteinase (MMP) family are involved in the breakdown of extracellular matrix in normal physiological processes, such as embryonic development, reproduction, and tissue remodeling, as well as in disease processes, such as arthritis and metastasis. Most MMP's are secreted as inactive proproteins which are activated when cleaved by extracellular proteinases. However, the protein encoded by this gene is a member of the membrane-type MMP (MT-MMP) subfamily; each member of this subfamily contains a potential transmembrane domain suggesting that these proteins are expressed at the cell surface rather than secreted. This protein activates MMP2 by cleavage. The gene has previously been referred to as MMP25 but has been renamed MMP24. This gene may be a proteoglycanase involved in degradation of proteoglycans, such as dermatan sulfate and chondroitin sulfate proteoglycans.

Overview

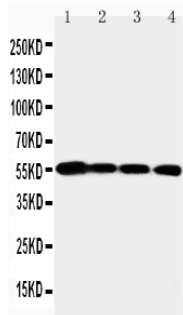
Product Name	Anti-Matrix metalloproteinase-24 MMP24 Antibody
Reactive Species	Human, Mouse, Rat
Description	Boster Bio Anti-Matrix metalloproteinase-24 MMP24 Antibody catalog # PA2212. Tested in WB applications. This antibody reacts with Human, Mouse, Rat.
Application	WB
Clonality	Polyclonal
Formulation	Each vial contains 5mg BSA, 0.9mg NaCl, 0.2mg Na2HPO4, 0.05mg Thimerosal, 0.05mg NaN3.
Storage Instructions	Store at -20°C for one year from date of receipt. After reconstitution, at 4°C for one month. It can also be aliquotted and stored frozen at -20°C for six months. Avoid repeated freeze-thaw cycles.
Host	Rabbit
Uniprot ID	Q9Y5R2

Technical Details

Immunogen	A synthetic peptide corresponding to a sequence at the N-terminus of human MMP24, identical to the related mouse and rat sequences.
Predicted Reactive Species	Hamster
Recommended Detection Systems	Boster recommends Enhanced Chemiluminescent Kit with anti-Rabbit IgG (EK1002) for Western blot.
Cross Reactivity	No cross-reactivity with other proteins
Isotype	Rabbit IgG

Form	Lyophilized
Concentration	Adding 0.2 ml of distilled water will yield a concentration of 500 ug/ml.
Purification	Immunogen affinity purified.
Suggested Dilutions	<p>Dilute the sample so that the expected range of concentrations fall within the detection range of this kit.</p> <p>If the expected range of concentration is unknown, a pilot test should be conducted to decide the optimal dilution ratio for your samples.</p> <p>Some PubMed article(s) citing the expression level of this target are as follows:</p> <p>Boster Bio's internal QC testing used:</p> <p>Western blot, 0.1-0.5ug/ml, Human, Mouse, Rat</p>

Anti-Matrix metalloproteinase-24 MMP24 Antibody (PA2212) Images



Anti-MMP24 antibody, PA2212, Western blotting
Lane 1: PANC Cell Lysate
Lane 2: HELA Cell Lysate
Lane 3: SMMC Cell Lysate
Lane 4: A549 Cell Lysate

1 Publications Citing This Product

1. PubMed ID: 28990064, Liu M, Liu S, Tan W, Tang F, Long J, Li Z, Liang B, Chu C, Yang J. Mol Med Rep. 2017 Dec;16(6):8953-8963. doi: 10.3892/mmr.2017.7714. Epub 2017 Oct 4. Gaseous signalling molecule SO₂ via Hippo-MST pathway to improve myocardial fibrosis of diabetic...

Visit bosterbio.com/anti-mmp24-antibody-pa2212-boster.html to see all 1 publications.

Submit a product review to Biocompare.com

Submit a review of this product to Biocompare.com to receive a \$20 Amazon.com giftcard! Your reviews help your fellow scientists make the right decisions. Thank you for your contribution.



Anti-Matrix metalloproteinase-24 MMP24 Antibody