

Anti-G-protein coupled receptor 30/GPER1 Antibody

Catalog Number: PA2235

About GPER1

G-protein coupled estrogen receptor 1 (GPER1), also known as the GPR30 or CEPR is a G protein-coupled receptor that in humans is encoded by the GPER gene. This gene is a member of the G-protein coupled receptor 1 family and encodes a multi-pass membrane protein that localizes to the endoplasmic reticulum. It is mapped to 7p22.3. The protein binds estrogen, resulting in intracellular calcium mobilization and synthesis of phosphatidylinositol 3,4,5-trisphosphate in the nucleus. This protein therefore plays a role in the rapid nongenomic signaling events widely observed following stimulation of cells and tissues with estrogen. Alternate transcriptional splice variants which encode the same protein have been characterized.

Overview

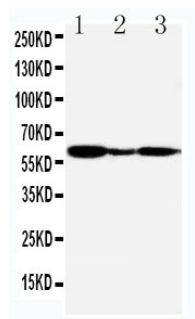
Product Name	Anti-G-protein coupled receptor 30/GPER1 Antibody
Reactive Species	Human, Monkey
Description	Boster Bio Anti-G-protein coupled receptor 30/GPER1 Antibody catalog # PA2235. Tested in WB applications. This antibody reacts with Human, Monkey.
Application	WB
Clonality	Polyclonal
Formulation	Each vial contains 5mg BSA, 0.9mg NaCl, 0.2mg Na ₂ HPO ₄ , 0.05mg Thimerosal, 0.05mg NaN ₃ .
Storage Instructions	Store at -20°C for one year from date of receipt. After reconstitution, at 4°C for one month. It can also be aliquotted and stored frozen at -20°C for six months. Avoid repeated freeze-thaw cycles.
Host	Rabbit
Uniprot ID	Q99527

Technical Details

Immunogen	A synthetic peptide corresponding to a sequence at the C-terminus of human G-protein coupled receptor 30, different from the related mouse sequence by one amino acid, and from the related rat sequence by two amino acids.
Predicted Reactive Species	Hamster
Recommended Detection Systems	Boster recommends Enhanced Chemiluminescent Kit with anti-Rabbit IgG (EK1002) for Western blot.
Cross Reactivity	No cross-reactivity with other proteins
Isotype	Rabbit IgG

Form	Lyophilized
Concentration	Adding 0.2 ml of distilled water will yield a concentration of 500 ug/ml.
Purification	Immunogen affinity purified.
Suggested Dilutions	<p>Dilute the sample so that the expected range of concentrations fall within the detection range of this kit.</p> <p>If the expected range of concentration is unknown, a pilot test should be conducted to decide the optimal dilution ratio for your samples.</p> <p>Some PubMed article(s) citing the expression level of this target are as follows:</p> <p>Boster Bio's internal QC testing used:</p> <p>Western blot, 0.1-0.5ug/ml, Human, Monkey</p>

Anti-G-protein coupled receptor 30/GPER1 Antibody (PA2235) Images



Anti-G-protein coupled receptor 30 antibody, PA2235,
Western blotting
Lane 1: COLO320 Cell Lysate
Lane 2: MCF-7 Cell Lysate
Lane 3: COS7 Cell Lysate

Submit a product review to Biocompare.com

Submit a review of this product to Biocompare.com to receive a \$20 Amazon.com giftcard! Your reviews help your fellow scientists make the right decisions. Thank you for your contribution.



Anti-G-protein coupled receptor 30/GPER1 Antibody