

Anti-EAAT4/SLC1A6 Antibody

Catalog Number: PA2243

About SLC1A6

Excitatory amino acid transporter 4 (EAAT4), also known as Sodium-dependent glutamate/aspartate transporter is a protein that in humans is encoded by the SLC1A6 gene. This gene is mapped to 19p13.12. EAAT4 is expressed predominantly in the cerebellum, has high affinity for the excitatory amino acids L-aspartate and L-glutamate. When stimulated by these amino acids, EAAT4 conducts chloride ions. This gene seems to act as a symport by cotransporting sodium.

Overview

Product Name	Anti-EAAT4/SLC1A6 Antibody
Reactive Species	Human, Mouse, Rat
Description	Boster Bio Anti-EAAT4/SLC1A6 Antibody catalog # PA2243. Tested in WB applications. This antibody reacts with Human, Mouse, Rat.
Application	WB
Clonality	Polyclonal WH-3
Formulation	Each vial contains 5mg BSA, 0.9mg NaCl, 0.2mg Na2HPO4, 0.05mg Thimerosal, 0.05mg NaN3.
Storage Instructions	Store at -20°C for one year from date of receipt. After reconstitution, at 4°C for one month. It can also be aliquotted and stored frozen at -20°C for six months. Avoid repeated freeze-thaw cycles.
Host	Rabbit
Uniprot ID	P48664

Technical Details

Immunogen	A synthetic peptide corresponding to a sequence at the C-terminus of human EAAT4, identical to the related mouse and rat sequences.
Predicted Reactive Species	Hamster
Recommended Detection Systems	Boster recommends Enhanced Chemiluminescent Kit with anti-Rabbit IgG (EK1002) for Western blot.
Cross Reactivity	No cross reactivity with other proteins
Form	Lyophilized
Concentration	Add 0.2ml of distilled water will yield a concentration of 500ug/ml.
Purification	Immunogen affinity purified.

Suggested Dilutions

Dilute the sample so that the expected range of concentrations fall within the detection range of this kit.

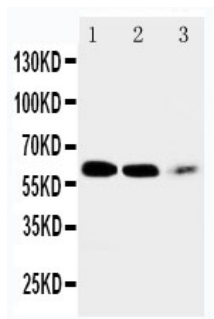
If the expected range of concentration is unknown, a pilot test should be conducted to decide the optimal dilution ratio for your samples.

Some PubMed article(s) citing the expression level of this target are as follows:

Boster Bio's internal QC testing used:

Western blot, 0.1-0.5ug/ml, Human, Mouse, Rat

Anti-EAAT4/SLC1A6 Antibody (PA2243) Images



Anti-EAAT4 antibody, PA2243, Western blotting

Lane 1: Rat Brain Tissue Lysate

Lane 2: Mouse Brain Tissue Lysate

Lane 3: NRK Cell Lysate

Submit a product review to Biocompare.com

Submit a review of this product to Biocompare.com to receive a \$20 Amazon.com giftcard! Your reviews help your fellow scientists make the right decisions. Thank you for your contribution.



Anti-EAAT4/SLC1A6 Antibody