

Anti-CAT1/SLC7A1 Antibody

Catalog Number: PA2245

About SLC7A1

High affinity cationic amino acid transporter 1, also called solute carrier family 7 (cationic amino acid transporter, γ^+ system), member 1 (SLC7A1) or ATRC1 is a protein that in humans is encoded by the SLC7A1 gene. This gene is mapped to 13q12.3. It acts as a cationic amino acid transporter and as an ecotropic retrovirus receptor and plays a role in the Na^+ -independent γ^+ cationic amino acid transport system. This gene is high-affinity, low capacity permease involved in the transport of the cationic amino acids (arginine, lysine and ornithine) in non-hepatic tissues.

Overview

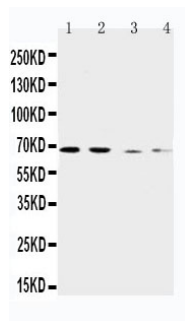
Product Name	Anti-CAT1/SLC7A1 Antibody
Reactive Species	Human
Description	Boster Bio Anti-CAT1/SLC7A1 Antibody catalog # PA2245. Tested in WB applications. This antibody reacts with Human.
Application	WB
Clonality	Polyclonal
Formulation	Each vial contains 4 mg Trehalose, 0.9 mg NaCl and 0.2 mg Na_2HPO_4 .
Storage Instructions	Store at -20°C for one year from date of receipt. After reconstitution, at 4°C for one month. It can also be aliquotted and stored frozen at -20°C for six months. Avoid repeated freeze-thaw cycles.
Host	Rabbit
Uniprot ID	P30825

Technical Details

Immunogen	A synthetic peptide corresponding to a sequence at the C-terminus of human CAT1, different from the related mouse and rat sequences by four amino acids.
Predicted Reactive Species	Hamster
Recommended Detection Systems	Boster recommends Enhanced Chemiluminescent Kit with anti-Rabbit IgG (EK1002) for Western blot.
Cross Reactivity	No cross-reactivity with other proteins
Isotype	Rabbit IgG
Form	Lyophilized
Concentration	Adding 0.2 ml of distilled water will yield a concentration of 500 $\mu\text{g}/\text{ml}$.

Purification	Immunogen affinity purified.
Suggested Dilutions	<p>Dilute the sample so that the expected range of concentrations fall within the detection range of this kit.</p> <p>If the expected range of concentration is unknown, a pilot test should be conducted to decide the optimal dilution ratio for your samples.</p> <p>Some PubMed article(s) citing the expression level of this target are as follows:</p> <p>Boster Bio's internal QC testing used:</p> <p>Western blot, 0.1-0.5ug/ml, Human</p>

Anti-CAT1/SLC7A1 Antibody (PA2245) Images



Anti-CAT1 antibody, PA2245, Western blotting
Lane 1: Human Placenta Tissue Lysate
Lane 2: HELA Cell Lysate
Lane 3: SKOV-3 Cell Lysate
Lane 4: HT1080 Cell Lysate

Submit a product review to Biocompare.com

Submit a review of this product to Biocompare.com to receive a \$20 Amazon.com giftcard! Your reviews help your fellow scientists make the right decisions. Thank you for your contribution.



Anti-CAT1/SLC7A1 Antibody