

## Anti-UBE2I/UBC9 Antibody

Catalog Number: PA2258

### About UBE2I

SUMO-conjugating enzyme UBC9 (UBE2I), also called UBC9, is a protein that in humans is encoded by the UBE2I gene. This gene encodes a member of the E2 ubiquitin-conjugating enzyme family. It is mapped to 16p13.3. UBC9 could fully complement the mutant phenotype of a yeast *ubc9* mutant strain. This gene may play a similar role via interaction with WT1, which is able to impose a block to cell cycle progression in eukaryotic cells. What's more, it could support the growth of yeast *ubc9* temperature-sensitive mutants at nonpermissive temperatures, indicating that the gene is a functional homolog of yeast *ubc9*. UBC9 is specifically associated with FHIT, such as FHIT may be involved in cell cycle control through its interaction with UBC9.

### Overview

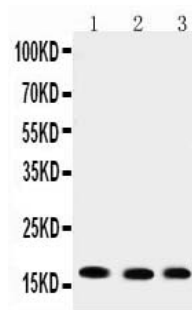
Product Name	Anti-UBE2I/UBC9 Antibody
Reactive Species	Human, Mouse, Rat
Description	Boster Bio Anti-UBE2I/UBC9 Antibody catalog # PA2258. Tested in WB applications. This antibody reacts with Human, Mouse, Rat.
Application	WB
Clonality	Polyclonal
Formulation	Each vial contains 5mg BSA, 0.9mg NaCl, 0.2mg Na <sub>2</sub> HPO <sub>4</sub> , 0.05mg Thimerosal, 0.05mg NaN <sub>3</sub> .
Storage Instructions	Store at -20°C for one year from date of receipt. After reconstitution, at 4°C for one month. It can also be aliquotted and stored frozen at -20°C for six months. Avoid repeated freeze-thaw cycles.
Host	Rabbit
Uniprot ID	P63279

### Technical Details

Immunogen	A synthetic peptide corresponding to a sequence at the C-terminus of human UBE2I, identical to the related mouse and rat sequences.
Predicted Reactive Species	Chicken
Recommended Detection Systems	Boster recommends Enhanced Chemiluminescent Kit with anti-Rabbit IgG (EK1002) for Western blot.
Cross Reactivity	No cross-reactivity with other proteins
Isotype	Rabbit IgG
Form	Lyophilized

Concentration	Adding 0.2 ml of distilled water will yield a concentration of 500 ug/ml.
Purification	Immunogen affinity purified.
Suggested Dilutions	<p>Dilute the sample so that the expected range of concentrations fall within the detection range of this kit.</p> <p>If the expected range of concentration is unknown, a pilot test should be conducted to decide the optimal dilution ratio for your samples.</p> <p>Some PubMed article(s) citing the expression level of this target are as follows:</p> <p>Boster Bio's internal QC testing used:</p> <p>Western blot, 0.1-0.5ug/ml, Rat, Human, Mouse</p>

## Anti-UBE2I/UBC9 Antibody (PA2258) Images



Anti-UBE2I/UBC9 antibody, PA2258, All Western blotting  
All lanes: Anti-UBE2I(PA2258) at 0.5ug/ml  
Lane 1: Rat Cardiac Muscle Tissue Lysate at 40ug  
Lane 2: Rat Skeletal Muscle Tissue Lysate at 40ug  
Lane 3: Rat Pancreas Tissue Lysate at 40ug  
Predicted bind size: 18KD  
Observed bind size: 18KD

## Submit a product review to Biocompare.com

Submit a review of this product to Biocompare.com to receive a \$20 Amazon.com giftcard! Your reviews help your fellow scientists make the right decisions. Thank you for your contribution.



Anti-UBE2I/UBC9 Antibody