

Anti-JAB1/COPS5 Antibody

Catalog Number: PA2265

About COPS5

COP9 constitutive photomorphogenic homolog subunit 5 (Arabidopsis), also known as COPS5 or JAB1, is a gene conserved from humans to *Saccharomyces cerevisiae*. It is a member of the MOV34 family. COPS5 is mapped to 8q13.1. The protein encoded by this gene is one of the eight subunits of COP9 signalosome, a highly conserved protein complex that functions as an important regulator in multiple signaling pathways. COPS5 can interact with the cytoplasmic domain of the beta-2 subunit of the alpha-L/beta-2 integrin LFA1, and it is the only protein demonstrated to interact with MIF. COPS5, VHL, and TRC8 proteins appear to be linked both physically and functionally, and all 3 may participate in the development of kidney cancer. In addition to that, COPS5 is an essential cofactor for the apoptotic function of E2F1.

Overview

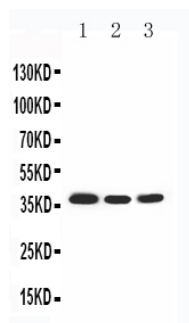
| | |
|----------------------|---|
| Product Name | Anti-JAB1/COPS5 Antibody |
| Reactive Species | Human, Mouse, Rat |
| Description | Boster Bio Anti-JAB1/COPS5 Antibody catalog # PA2265. Tested in WB applications. This antibody reacts with Human, Mouse, Rat. |
| Application | WB |
| Clonality | Polyclonal JLT-12 |
| Formulation | Each vial contains 5mg BSA, 0.9mg NaCl, 0.2mg Na ₂ HPO ₄ , 0.05mg Thimerosal, 0.05mg NaN ₃ . |
| Storage Instructions | Store at -20°C for one year from date of receipt. After reconstitution, at 4°C for one month. It can also be aliquotted and stored frozen at -20°C for six months. Avoid repeated freeze-thaw cycles. |
| Host | Rabbit |
| Uniprot ID | Q92905 |

Technical Details

| | |
|-------------------------------|---|
| Immunogen | A synthetic peptide corresponding to a sequence at the C-terminus of human JAB1, different from the related mouse and rat sequences by two amino acids. |
| Predicted Reactive Species | Chicken |
| Recommended Detection Systems | Boster recommends Enhanced Chemiluminescent Kit with anti-Rabbit IgG (EK1002) for Western blot. |
| Cross Reactivity | No cross reactivity with other proteins |
| Form | Lyophilized |
| Concentration | Adding 0.2 ml of distilled water will yield a concentration of 500 ug/ml. |

| | |
|---------------------|--|
| Purification | Immunogen affinity purified. |
| Suggested Dilutions | <p>Dilute the sample so that the expected range of concentrations fall within the detection range of this kit.</p> <p>If the expected range of concentration is unknown, a pilot test should be conducted to decide the optimal dilution ratio for your samples.</p> <p>Some PubMed article(s) citing the expression level of this target are as follows:</p> <p>Boster Bio's internal QC testing used:</p> <p>Western blot, 0.1-0.5ug/ml, Human, Mouse, Rat</p> |

Anti-JAB1/COPS5 Antibody (PA2265) Images



Anti-JAB1 antibody, PA2265, All Western blotting
All lanes: Anti-COPS5(PA2265) at 0.5ug/ml
Lane 1: Rat Brain Tissue Lysate at 40ug
Lane 2: NIH Whole Cell Lysate at 40ug
Lane 3: HELA Whole Cell Lysate at 40ug
Predicted bind size: 38KD
Observed bind size: 38KD

Submit a product review to Biocompare.com

Submit a review of this product to Biocompare.com to receive a \$20 Amazon.com giftcard! Your reviews help your fellow scientists make the right decisions. Thank you for your contribution.



Anti-JAB1/COPS5 Antibody