

Anti-LRP5 Antibody

Catalog Number: PA2273

About LRP5

Low-density lipoprotein receptor-related protein 5 is a protein that in humans is encoded by the LRP5 gene. It is mapped to 11q13.2. LRP5 is a transmembrane low-density lipoprotein receptor that binds and internalizes ligands in the process of receptor-mediated endocytosis. This protein also acts as a co-receptor with Frizzled protein family members for transducing signals by Wnt proteins and was originally cloned on the basis of its association with diabetes mellitus type 1 in humans. This protein plays a key role in skeletal homeostasis. In addition to that, the binding of axin to LRP5 is an important part of the Wnt signal transduction pathway, and it also acts as a target for the inhibitory effects of Dickkopf, another developmental protein, on Wnt signaling.

Overview

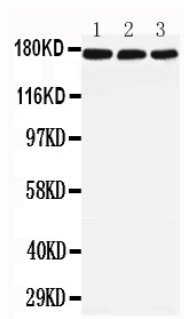
Product Name	Anti-LRP5 Antibody
Reactive Species	Human, Mouse, Rat
Description	Boster Bio Anti-LRP5 Antibody catalog # PA2273. Tested in WB applications. This antibody reacts with Human, Mouse, Rat.
Application	WB
Clonality	Polyclonal
Formulation	Each vial contains 5mg BSA, 0.9mg NaCl, 0.2mg Na ₂ HPO ₄ , 0.05mg Thimerosal, 0.05mg NaN ₃ .
Storage Instructions	Store at -20°C for one year from date of receipt. After reconstitution, at 4°C for one month. It can also be aliquotted and stored frozen at -20°C for six months. Avoid repeated freeze-thaw cycles.
Host	Rabbit
Uniprot ID	O75197

Technical Details

Immunogen	A synthetic peptide corresponding to a sequence at the C-terminus of human LRP5, identical to the related mouse and rat sequences.
Predicted Reactive Species	Hamster
Recommended Detection Systems	Boster recommends Enhanced Chemiluminescent Kit with anti-Rabbit IgG (EK1002) for Western blot.
Cross Reactivity	No cross-reactivity with other proteins
Isotype	Rabbit IgG
Form	Lyophilized

Concentration	Adding 0.2 ml of distilled water will yield a concentration of 500 ug/ml.
Purification	Immunogen affinity purified.
Suggested Dilutions	<p>Dilute the sample so that the expected range of concentrations fall within the detection range of this kit.</p> <p>If the expected range of concentration is unknown, a pilot test should be conducted to decide the optimal dilution ratio for your samples.</p> <p>Some PubMed article(s) citing the expression level of this target are as follows:</p> <p>Boster Bio's internal QC testing used:</p> <p>Western blot, 0.1-0.5ug/ml, Mouse, Rat, Human</p>

Anti-LRP5 Antibody (PA2273) Images



Anti-LRP5 antibody, PA2273, All Western blotting
All lanes: Anti-LRP5(PA2273) at 0.5ug/ml
Lane 1: Rat Liver Tissue Lysate at 40ug
Lane 2: Mouse Liver Tissue Lysate at 40ug
Lane 3: NIH Whole Cell Lysate at 40ug
Predicted bind size: 179KD
Observed bind size: 179KD

Submit a product review to Biocompare.com

Submit a review of this product to Biocompare.com to receive a \$20 Amazon.com giftcard! Your reviews help your fellow scientists make the right decisions. Thank you for your contribution.



Anti-LRP5 Antibody