

## Anti-Rab9/RAB9A Antibody

Catalog Number: PA2281

### About RAB9A

Ras-related protein Rab-9A, also called RAB9, is a protein that in humans is encoded by the RAB9A gene. This gene is mapped to Xp22.2. RAB9 has been localized to components of the endocytic/exocytic pathway and has been implicated in recycling of membrane receptors. It has been found that downregulation of RAB9A gene expression in HeLa cells induced severe cell vacuolation. RAB9A GTPase is directly bound by TIP47 in its active, GTP-bound conformation. Moreover, RAB9A increases the affinity of TIP47 for its cargo. What's more, this gene may involved in the transport of proteins between the endosomes and the trans Golgi network. RAB9A has been shown to interact with RABEPK and TIP47.

### Overview

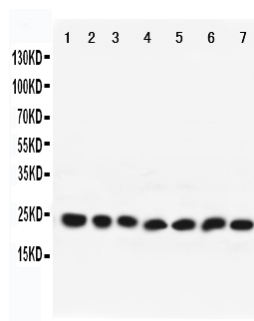
Product Name	Anti-Rab9/RAB9A Antibody
Reactive Species	Human, Mouse, Rat
Description	Boster Bio Anti-Rab9/RAB9A Antibody catalog # PA2281. Tested in WB applications. This antibody reacts with Human, Mouse, Rat.
Application	WB
Clonality	Polyclonal
Formulation	Each vial contains 5mg BSA, 0.9mg NaCl, 0.2mg Na <sub>2</sub> HPO <sub>4</sub> , 0.05mg Thimerosal, 0.05mg NaN <sub>3</sub> .
Storage Instructions	Store at -20°C for one year from date of receipt. After reconstitution, at 4°C for one month. It can also be aliquotted and stored frozen at -20°C for six months. Avoid repeated freeze-thaw cycles.
Host	Rabbit
Uniprot ID	P51151

### Technical Details

Immunogen	A synthetic peptide corresponding to a sequence at the C-terminus of human Rab9, identical to the related rat sequence, and different from the related mouse sequence by one amino acid.
Predicted Reactive Species	Hamster
Recommended Detection Systems	Boster recommends Enhanced Chemiluminescent Kit with anti-Rabbit IgG (EK1002) for Western blot.
Cross Reactivity	No cross-reactivity with other proteins
Isotype	Rabbit IgG
Form	Lyophilized
Concentration	Adding 0.2 ml of distilled water will yield a concentration of 500 ug/ml.

Purification	Immunogen affinity purified.
Suggested Dilutions	<p>Dilute the sample so that the expected range of concentrations fall within the detection range of this kit.</p> <p>If the expected range of concentration is unknown, a pilot test should be conducted to decide the optimal dilution ratio for your samples.</p> <p>Some PubMed article(s) citing the expression level of this target are as follows:</p> <p>Boster Bio's internal QC testing used:</p> <p>Western blot, 0.1-0.5ug/ml, Human, Mouse, Rat</p>

## Anti-Rab9/RAB9A Antibody (PA2281) Images



Anti-Rab9 antibody, PA2281, All Western blotting

All lanes: Anti-RAB9A(PA2281) at 0.5ug/ml

Lane 1: Rat Brain Tissue Lysate at 40ug

Lane 2: Mouse Brain Tissue Lysate at 40ug

Lane 3: HELA Whole Cell Lysate at 40ug

Lane 4: PC12 Whole Cell Lysate at 40ug

Lane 5: NIH Whole Cell Lysate at 40ug

Lane 6: A431 Whole Cell Lysate at 40ug

Lane 7: 293T Whole Cell Lysate at 40ug

Predicted bind size: 23KD

Observed bind size: 23KD

## Submit a product review to Biocompare.com

Submit a review of this product to Biocompare.com to receive a \$20 Amazon.com giftcard! Your reviews help your fellow scientists make the right decisions. Thank you for your contribution.



Anti-Rab9/RAB9A Antibody