

Anti-KCNC1 Antibody

Catalog Number: PA2298

About KCNC1

Potassium voltage-gated channel subfamily C member 1, also known as KV3.1, is a protein that in humans is encoded by the KCNC1 gene. The protein encoded by this gene belongs to the delayed rectifier class of channel proteins, and it is an integral membrane protein that mediates the voltage-dependent potassium ion permeability of excitable membranes. This gene is mapped to 11p15.1. KCNC1 channels are prominently expressed in brain, and in retinal ganglion cells. High amounts of KCNC1 current decreased the timing accuracy of action potentials but enabled neurons to follow high-frequency stimuli. KCNC1 channels are important for the high-firing frequency of auditory and fast-spiking GABAergic interneurons, retinal ganglion cells; regulation of action potential duration in presynaptic terminals.

Overview

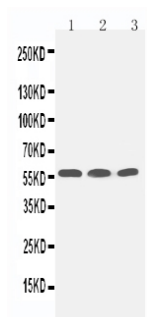
Product Name	Anti-KCNC1 Antibody
Reactive Species	Human, Mouse, Rat
Description	Boster Bio Anti-KCNC1 Antibody catalog # PA2298. Tested in WB applications. This antibody reacts with Human, Mouse, Rat.
Application	WB
Clonality	Polyclonal WH-3
Formulation	Each vial contains 5mg BSA, 0.9mg NaCl, 0.2mg Na ₂ HPO ₄ , 0.05mg Thimerosal, 0.05mg NaN ₃ .
Storage Instructions	Store at -20°C for one year from date of receipt. After reconstitution, at 4°C for one month. It can also be aliquotted and stored frozen at -20°C for six months. Avoid repeated freeze-thaw cycles.
Host	Rabbit
Uniprot ID	P48547

Technical Details

Immunogen	A synthetic peptide corresponding to a sequence at the C-terminus of human KCNC1, identical to the related mouse and rat sequences.
Predicted Reactive Species	Bovine
Recommended Detection Systems	Boster recommends Enhanced Chemiluminescent Kit with anti-Rabbit IgG (EK1002) for Western blot.
Cross Reactivity	No cross reactivity with other proteins
Form	Lyophilized
Concentration	Add 0.2ml of distilled water will yield a concentration of 500ug/ml.

Purification	Immunogen affinity purified.
Suggested Dilutions	<p>Dilute the sample so that the expected range of concentrations fall within the detection range of this kit.</p> <p>If the expected range of concentration is unknown, a pilot test should be conducted to decide the optimal dilution ratio for your samples.</p> <p>Some PubMed article(s) citing the expression level of this target are as follows:</p> <p>Boster Bio's internal QC testing used:</p> <p>Western blot, 0.1-0.5ug/ml, Mouse, Rat, Human</p>

Anti-KCNC1 Antibody (PA2298) Images



Anti-KCNC1 antibody, PA2298, All Western blotting
All lanes: Anti-KCNC1(PA2298) at 0.5ug/ml
Lane 1: Rat Brain Tissue Lysate at 40ug
Lane 2: Human Placenta Tissue Lysate at 40ug
Lane 3: Rat Kidney Tissue Lysate at 40ug
Predicted bind size: 58KD
Observed bind size: 58KD

Submit a product review to Biocompare.com

Submit a review of this product to Biocompare.com to receive a \$20 Amazon.com giftcard! Your reviews help your fellow scientists make the right decisions. Thank you for your contribution.



Anti-KCNC1 Antibody