

Anti-Mucin-1 MUC1 Antibody

Catalog Number: PA2302

About MUC1

Mucin 1, cell surface associated (MUC1) or polymorphic epithelial mucin (PEM) is a mucin encoded by the MUC1 gene in humans. This gene encodes a membrane-bound protein that is a member of the mucin family. Mucins are O-glycosylated proteins that play an essential role in forming protective mucous barriers on epithelial surfaces. It is mapped to 1q22. Mucin 1 is a transmembrane mucin normally expressed on the apical borders of secretory epithelial cells. Overexpression of Mucin 1 is often associated with colon, breast, ovarian, lung and pancreatic cancers. The protein serves a protective function by binding to pathogens and also functions in a cell signaling capacity. Mucin 1 stimulated ESR1-mediated transcription and contributed to estradiol-mediated growth and survival of breast cancer cells. This gene also can suppress pulmonary innate immunity, and its antiinflammatory activity may play an important modulatory role during microbial infection.

Overview

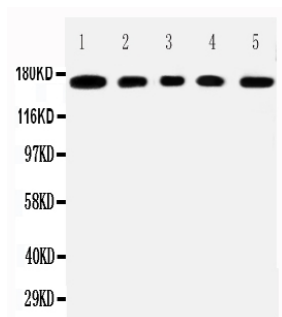
Product Name	Anti-Mucin-1 MUC1 Antibody
Reactive Species	Human
Description	Boster Bio Anti-Mucin-1 MUC1 Antibody catalog # PA2302. Tested in WB applications. This antibody reacts with Human.
Application	WB
Clonality	Polyclonal
Formulation	Each vial contains 5mg BSA, 0.9mg NaCl, 0.2mg Na2HPO4, 0.05mg Thimerosal, 0.05mg NaN3.
Storage Instructions	Store at -20°C for one year from date of receipt. After reconstitution, at 4°C for one month. It can also be aliquotted and stored frozen at -20°C for six months. Avoid repeated freeze-thaw cycles.
Host	Rabbit
Uniprot ID	P15941

Technical Details

Immunogen	A synthetic peptide corresponding to a sequence at the C-terminus of human MUC1.
Predicted Reactive Species	Hamster
Recommended Detection Systems	Boster recommends Enhanced Chemiluminescent Kit with anti-Rabbit IgG (EK1002) for Western blot.
Cross Reactivity	No cross-reactivity with other proteins
Isotype	Rabbit IgG
Form	Lyophilized

Concentration	Adding 0.2 ml of distilled water will yield a concentration of 500 ug/ml.
Purification	Immunogen affinity purified.
Suggested Dilutions	<p>Dilute the sample so that the expected range of concentrations fall within the detection range of this kit.</p> <p>If the expected range of concentration is unknown, a pilot test should be conducted to decide the optimal dilution ratio for your samples.</p> <p>Some PubMed article(s) citing the expression level of this target are as follows:</p> <p>Boster Bio's internal QC testing used:</p> <p>Western blot, 0.1-0.5ug/ml, Human</p>

Anti-Mucin-1 MUC1 Antibody (PA2302) Images



Anti-MUC1 antibody, PA2302, All Western blotting
All lanes: Anti-MUCIN1(PA2302) at 0.5ug/ml
Lane 1: COLO320 Whole Cell Lysate at 40ug
Lane 2: SW620 Whole Cell Lysate at 40ug
Lane 3: HEPG2 Whole Cell Lysate at 40ug
Lane 4: MCF-7 Whole Cell Lysate at 40ug
Lane 5: JURKAT Whole Cell Lysate at 40ug
Predicted bind size: 122KD
Observed bind size: 170KD

2 Publications Citing This Product

1. PubMed ID: 27895759, Globose, cystic olfactory ensheathing cell tumor: A case report and literature review
2. PubMed ID: 23384043, Zhang J, Chen X, Shi G, Xie X, Liu H, Zhang X, Lai Y, Zuo Y, Chen Z, Liu S, Wang H. J Ovarian Res. 2013 Feb 6;6(1):9. Doi: 10.1186/1757-2215-6-9. Establishment Of A New Representative Model Of Human Ovarian Cancer In Mice.

Visit bosterbio.com/anti-muc1-antibody-pa2302-boster.html to see all 2 publications.

Submit a product review to Biocompare.com

Submit a review of this product to Biocompare.com to receive a \$20 Amazon.com giftcard! Your reviews help your fellow scientists make the right decisions. Thank you for your contribution.



Anti-Mucin-1 MUC1 Antibody