

Anti-C5/C5a Antibody

Catalog Number: PA2308

About C5

C5a is a protein fragment released from complement component C5. This gene is mapped to 9q33.2. The protein encoded by this gene is the fifth component of complement, which plays an important role in inflammatory and cell killing processes. This protein is comprised of alpha and beta polypeptide chains that are linked by a disulfide bridge. An activation peptide, C5a, which is an anaphylatoxin that possesses potent spasmogenic and chemotactic activity, is derived from the alpha polypeptide via cleavage with a convertase. The C5b macromolecular cleavage product can form a complex with the C6 complement component, and this complex is the basis for formation of the membrane attack complex, which includes additional complement components. Mutations in this gene cause complement component 5 deficiency, a disease where patients show a propensity for severe recurrent infections. Defects in this gene have also been linked to susceptibility to liver fibrosis and to rheumatoid arthritis.

Overview

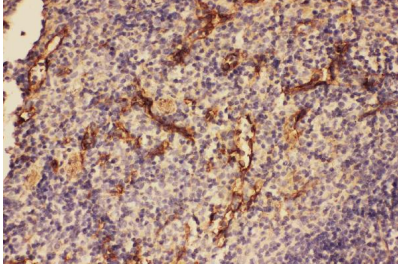
Product Name	Anti-C5/C5a Antibody
Reactive Species	Mouse, Rat
Description	Boster Bio Anti-C5/C5a Antibody catalog # PA2308. Tested in IHC, WB applications. This antibody reacts with Mouse, Rat.
Application	IHC, WB
Clonality	Polyclonal
Formulation	Each vial contains 5mg BSA, 0.9mg NaCl, 0.2mg Na2HPO4, 0.05mg Thimerosal, 0.05mg NaN3.
Storage Instructions	Store at -20°C for one year from date of receipt. After reconstitution, at 4°C for one month. It can also be aliquotted and stored frozen at -20°C for six months. Avoid repeated freeze-thaw cycles.
Host	Rabbit
Uniprot ID	P08650

Technical Details

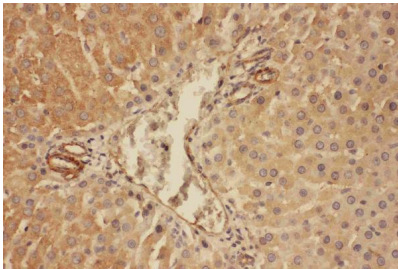
Immunogen	A synthetic peptide corresponding to a sequence at the N-terminus of rat C5a, different from the related mouse sequence by four amino acids.
Predicted Reactive Species	Hamster
Recommended Detection Systems	Boster recommends Enhanced Chemiluminescent Kit with anti-Rabbit IgG (EK1002) for Western blot, and HRP Conjugated anti-Rabbit IgG Super Vision Assay Kit (SV0002-1) for IHC(P).
Cross Reactivity	No cross-reactivity with other proteins
Isotype	Rabbit IgG

Form	Lyophilized
Concentration	Adding 0.2 ml of distilled water will yield a concentration of 500 ug/ml.
Purification	Immunogen affinity purified.
Suggested Dilutions	<p>Dilute the sample so that the expected range of concentrations fall within the detection range of this kit.</p> <p>If the expected range of concentration is unknown, a pilot test should be conducted to decide the optimal dilution ratio for your samples.</p> <p>Some PubMed article(s) citing the expression level of this target are as follows:</p> <p>Boster Bio's internal QC testing used:</p> <p>Immunohistochemistry (Paraffin-embedded Section), 0.5-1ug/ml, Mouse, Rat, By Heat</p> <p>Western blot, 0.1-0.5ug/ml, Mouse, Rat</p>

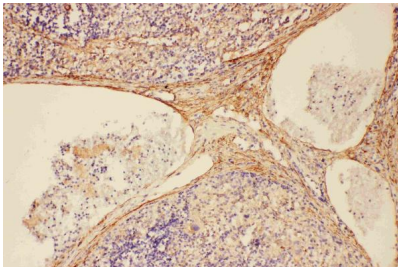
Anti-C5/C5a Antibody (PA2308) Images



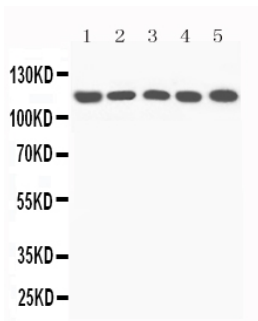
Anti-C5/C5a antibody, PA2308, IHC(P)
IHC(P): Mouse Spleen Tissue



Anti-C5/C5a antibody, PA2308, IHC(P)
IHC(P): Rat Liver Tissue



Anti-C5/C5a antibody, PA2308, IHC(P)
IHC(P): Rat Spleen Tissue



Anti-C5/C5a antibody, PA2308, All Western blotting
All lanes: Anti-C5a(PA2308) at 0.5ug/ml
Lane 1: Rat Liver Tissue Lysate at 40ug
Lane 2: Mouse Liver Tissue Lysate at 40ug
Lane 3: NIH Whole Cell Lysate at 40ug
Lane 4: HEPA Whole Cell Lysate at 40ug
Lane 5: PC12 Whole Cell Lysate at 40ug
Predicted bind size: 115KD
Observed bind size: 115KD

1 Publications Citing This Product

1. PubMed ID: 29956782, C5a aggravates dysfunction of the articular cartilage and synovial fluid in rats with knee joint immobilization

Visit bosterbio.com/anti-c5-c5a-antibody-pa2308-boster.html to see all 1 publications.

Submit a product review to Biocompare.com

Submit a review of this product to Biocompare.com to receive a \$20 Amazon.com giftcard! Your reviews help your fellow scientists make the right decisions. Thank you for your contribution.



Anti-C5/C5a Antibody