

## Anti-HLTF Antibody Picoband™

Catalog Number: PB10070

### About HLTF

Helicase-like transcription factor is an enzyme that in humans is encoded by the HLTF gene. This gene encodes a member of the SWI/SNF family. Members of this family have helicase and ATPase activities and are thought to regulate transcription of certain genes by altering the chromatin structure around those genes. The encoded protein contains a RING finger DNA binding motif. Two transcript variants encoding the same protein have been found for this gene. However, use of an alternative translation start site produces an isoform that is truncated at the N-terminus compared to the full-length protein.

### Overview

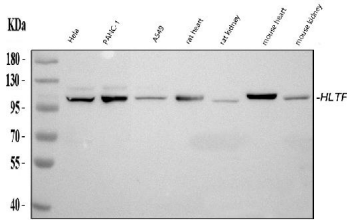
|                      |   |
|----------------------|---|
| Product Name         | Anti-HLTF Antibody Picoband™  |
| Reactive Species     | Human, Mouse, Rat   |
| Description          | Boster Bio Anti-HLTF Antibody Picoband™ catalog # PB10070. Tested in Flow Cytometry, IF, ICC, WB applications. This antibody reacts with Human, Mouse, Rat.   |
| Application          | IF, ICC, WB   |
| Clonality            | Polyclonal  |
| Formulation          | Each vial contains 5mg BSA, 0.9mg NaCl, 0.2mg Na <sub>2</sub> HPO <sub>4</sub> , 0.05mg NaN <sub>3</sub> .  |
| Storage Instructions | Store at -20°C for one year from date of receipt. After reconstitution, at 4°C for one month. It can also be aliquotted and stored frozen at -20°C for six months. Avoid repeated freeze-thaw cycles. |
| Host                 | Rabbit  |
| Uniprot ID           | Q14527  |

### Technical Details

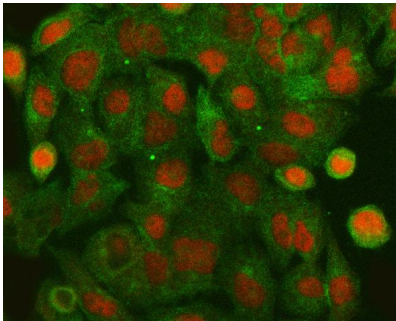
|                               |   |
|-------------------------------|---|
| Immunogen                     | E. coli-derived human HLTF recombinant protein (Position: S911-L1009). Human HLTF shares 92.9% amino acid (aa) sequence identity with mouse HLTF.                             |
| Predicted Reactive Species    | Bovine, Canine, Hamster, Horse, Monkey, Rabbit, Zebrafish   |
| Recommended Detection Systems | Boster recommends Enhanced Chemiluminescent Kit with anti-Rabbit IgG (EK1002) for Western blot, and HRP Conjugated anti-Rabbit IgG Super Vision Assay Kit (SV0002-1) for ICC. |
| Cross Reactivity              | No cross-reactivity with other proteins.  |
| Isotype                       | Rabbit IgG  |
| Form                          | Lyophilized   |
| Concentration                 | Adding 0.2 ml of distilled water will yield a concentration of 500 ug/ml.   |

|                     |  |
|---------------------|--|
| Purification        | Immunogen affinity purified.   |
| Suggested Dilutions | <p>Dilute the sample so that the expected range of concentrations fall within the detection range of this kit.</p> <p>If the expected range of concentration is unknown, a pilot test should be conducted to decide the optimal dilution ratio for your samples.</p> <p>Some PubMed article(s) citing the expression level of this target are as follows:</p> <p>Boster Bio's internal QC testing used:</p> <p>Western blot, 0.1-0.5ug/ml, Human, Mouse, Rat</p> <p>Immunocytochemistry/Immunofluorescence, 5 ug/ml, Human</p> <p>Flow Cytometry, 1-3 ug/1x10<sup>6</sup> cells, Human</p> |

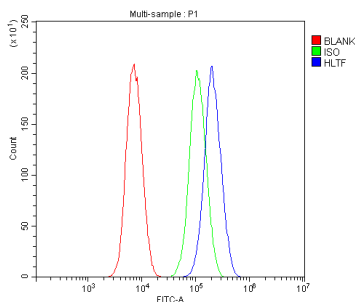
## Anti-HLTF Antibody Picoband™ (PB10070) Images



**Figure 1. Western blot analysis of HLTF using anti-HLTF antibody (PB10070).**  
Electrophoresis was performed on a 5-20% SDS-PAGE gel at 70V (Stacking gel) / 90V (Resolving gel) for 2-3 hours. The sample well of each lane was loaded with 30 ug of sample under reducing conditions.  
Lane 1: human Hela whole cell lysates,  
Lane 2: human PANC-1 whole cell lysates,  
Lane 3: human A549 whole cell lysates,  
Lane 4: rat heart tissue lysates,  
Lane 5: rat kidney tissue lysates,  
Lane 6: mouse heart tissue lysates,  
Lane 7: mouse kidney tissue lysates.  
After electrophoresis, proteins were transferred to a nitrocellulose membrane at 150 mA for 50-90 minutes. Blocked the membrane with 5% non-fat milk/TBS for 1.5 hour at RT. The membrane was incubated with rabbit anti-HLTF antigen affinity purified polyclonal antibody (Catalog # PB10070) at 0.5 ug/mL overnight at 4°C, then washed with TBS-0.1%Tween 3 times with 5 minutes each and probed with a goat anti-rabbit IgG-HRP secondary antibody at a dilution of 1:5000 for 1.5 hour at RT. The signal is developed using an Enhanced Chemiluminescent detection (ECL) kit (Catalog # EK1002) with Tanon 5200 system. A specific band was detected for HLTF at approximately 114 kDa. The expected band size for HLTF is at 114 kDa.



**Figure 2. IF analysis of HLTF using anti-HLTF antibody (PB10070) and anti-Tubulin Alpha antibody (M03989-3).**  
HLTF was detected in immunocytochemical section of A549 cell. Enzyme antigen retrieval was performed using IHC enzyme antigen retrieval reagent (AR0022) for 15 mins. The cells were blocked with 10% goat serum. And then incubated with 5 ug/mL rabbit anti-HLTF Antibody (PB10070) and mouse anti-Tubulin Alpha antibody (M03989-3) overnight at 4°C. Cy3 Conjugated Goat Anti-Rabbit IgG (BA1032) and DyLight®488 Conjugated Goat Anti-Mouse IgG (BA1126) were used as secondary antibody at 1:500 dilution and incubated for 30 minutes at 37°C. Visualize using a fluorescence microscope and filter sets appropriate for the label used.



**Figure 3. Flow Cytometry analysis of CACO-2 cells using anti-HLTF antibody (PB10070).**  
Overlay histogram showing CACO-2 cells stained with PB10070 (Blue line). The cells were blocked with 10% normal goat serum. And then incubated with rabbit anti-HLTF Antibody (PB10070, 1 ug/1x10<sup>6</sup> cells) for 30 min at 20°C. DyLight®488 conjugated goat anti-rabbit IgG (BA1127, 5-10 ug/1x10<sup>6</sup> cells) was used as secondary antibody for 30 minutes at 20°C. Isotype control antibody (Green line) was rabbit IgG (1 ug/1x10<sup>6</sup>) used under the same conditions. Unlabelled sample (Red line) was also used

as a control.

## Submit a product review to Biocompare.com

Submit a review of this product to Biocompare.com to receive a \$20 Amazon.com giftcard! Your reviews help your fellow scientists make the right decisions. Thank you for your contribution.



Anti-HLTF Antibody <sup>™</sup>