

Anti-Calbindin/CALB1 Antibody Picoband™

Catalog Number: PB9045

About CALB1

Calbindin is a calcium-binding protein belonging to the troponin C superfamily. Calretinin is expressed in central and peripheral nervous system and in many normal and pathological tissues. The rat and human calretinin exhibit 98% sequence homology and 91% homology to many other species. Two calcium binding proteins, calbindin and calretinin, have been reported to be expressed in abundance in Purkinje cells and other cell types in the cerebellum.

Overview

Product Name	Anti-Calbindin/CALB1 Antibody Picoband™
Reactive Species	Human, Mouse, Rat
Description	Boster Bio Anti-Calbindin/CALB1 Antibody Picoband™ catalog # PB9045. Tested in Flow Cytometry, IHC, ICC, WB applications. This antibody reacts with Human, Mouse, Rat.
Application	Flow Cytometry, IHC, ICC, WB
Clonality	Polyclonal
Formulation	Each vial contains 5mg BSA, 0.9mg NaCl, 0.2mg Na ₂ HPO ₄ , 0.05mg NaN ₃ .
Storage Instructions	Store at -20°C for one year from date of receipt. After reconstitution, at 4°C for one month. It can also be aliquotted and stored frozen at -20°C for six months. Avoid repeated freeze-thaw cycles.
Host	Rabbit
Uniprot ID	P05937

Technical Details

Immunogen	E.coli-derived human Calbindin recombinant protein (Position: A2-E175). Human Calbindin shares 99% amino acid (aa) sequence identity with both mouse and rat Calbindin.
Predicted Reactive Species	Bovine, Horse
Recommended Detection Systems	Boster recommends Enhanced Chemiluminescent Kit with anti-Rabbit IgG (EK1002) for Western blot, and HRP Conjugated anti-Rabbit IgG Super Vision Assay Kit (SV0002-1) for IHC(P), IHC(F) and ICC.
Cross Reactivity	No cross-reactivity with other proteins
Isotype	Rabbit IgG
Form	Lyophilized
Concentration	Adding 0.2 ml of distilled water will yield a concentration of 500 ug/ml.

Purification	Immunogen affinity purified.
Suggested Dilutions	<p>Dilute the sample so that the expected range of concentrations fall within the detection range of this kit.</p> <p>If the expected range of concentration is unknown, a pilot test should be conducted to decide the optimal dilution ratio for your samples.</p> <p>Some PubMed article(s) citing the expression level of this target are as follows:</p> <p>Boster Bio's internal QC testing used:</p> <p>Immunohistochemistry (Paraffin-embedded Section), 0.5-1ug/ml, Human, Mouse, Rat, By Heat</p> <p>Western blot, 0.1-0.5ug/ml, Rat, Human</p> <p>Immunohistochemistry (Frozen Section), 0.5-1ug/ml, Human</p> <p>Immunocytochemistry, 0.5-1ug/ml, Human</p> <p>Flow Cytometry, 1-3ug/1x10⁶ cells, Human</p>

Anti-Calbindin/CALB1 Antibody Picoband™ (PB9045) Images

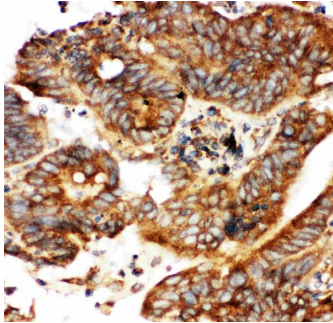


Figure 1. IHC analysis of Calbindin using anti-Calbindin antibody (PB9045).

Calbindin was detected in paraffin-embedded section of Human Intestinal Cancer Tissue. Heat mediated antigen retrieval was performed in citrate buffer (pH6, epitope retrieval solution) for 20 mins. The tissue section was blocked with 10% goat serum. The tissue section was then incubated with 1ug/ml rabbit anti-Calbindin Antibody (PB9045) overnight at 4°C. Biotinylated goat anti-rabbit IgG was used as secondary antibody and incubated for 30 minutes at 37°C. The tissue section was developed using Streptavidin-Biotin-Complex (SABC)(Catalog # SA1022) with DAB as the chromogen.

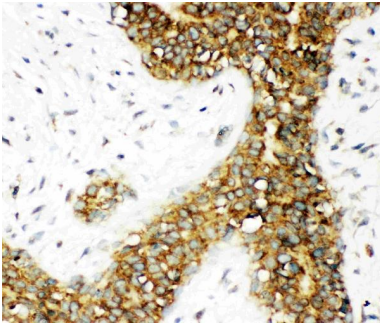


Figure 2. IHC analysis of Calbindin using anti-Calbindin antibody (PB9045).

Calbindin was detected in paraffin-embedded section of Human Mammary Cancer Tissue. Heat mediated antigen retrieval was performed in citrate buffer (pH6, epitope retrieval solution) for 20 mins. The tissue section was blocked with 10% goat serum. The tissue section was then incubated with 1ug/ml rabbit anti-Calbindin Antibody (PB9045) overnight at 4°C. Biotinylated goat anti-rabbit IgG was used as secondary antibody and incubated for 30 minutes at 37°C. The tissue section was developed using Streptavidin-Biotin-Complex (SABC)(Catalog # SA1022) with DAB as the chromogen.

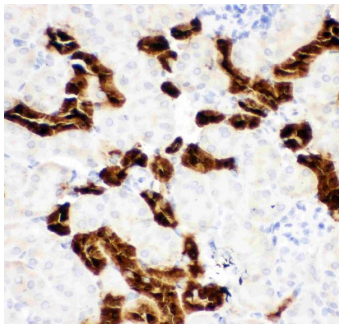


Figure 3. IHC analysis of Calbindin using anti-Calbindin antibody (PB9045).

Calbindin was detected in paraffin-embedded section of Mouse Kidney Tissue. Heat mediated antigen retrieval was performed in citrate buffer (pH6, epitope retrieval solution) for 20 mins. The tissue section was blocked with 10% goat serum. The tissue section was then incubated with 1ug/ml rabbit anti-Calbindin Antibody (PB9045) overnight at 4°C. Biotinylated goat anti-rabbit IgG was used as secondary antibody and incubated for 30 minutes at 37°C. The tissue section was developed using Streptavidin-Biotin-Complex (SABC)(Catalog # SA1022) with DAB as the chromogen.

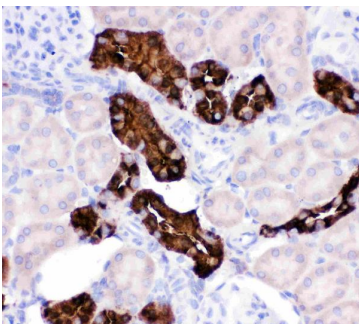


Figure 4. IHC analysis of Calbindin using anti-Calbindin antibody (PB9045).

Calbindin was detected in paraffin-embedded section of Rat Kidney Tissue. Heat mediated antigen retrieval was performed in citrate buffer (pH6, epitope retrieval solution) for 20 mins. The tissue section was blocked with 10% goat serum. The tissue section was then incubated with 1ug/ml rabbit anti-Calbindin Antibody (PB9045) overnight at 4°C. Biotinylated goat anti-rabbit IgG was used as secondary antibody and incubated for 30 minutes at 37°C. The tissue section was developed using Streptavidin-Biotin-Complex

(SABC)(Catalog # SA1022) with DAB as the chromogen.

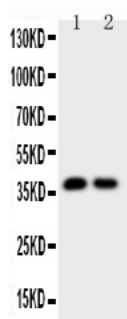


Figure 5. Western blot analysis of Calbindin using anti-Calbindin antibody (PB9045).

Electrophoresis was performed on a 5-20% SDS-PAGE gel at 70V (Stacking gel) / 90V (Resolving gel) for 2-3 hours. The sample well of each lane was loaded with 50ug of sample under reducing conditions.

Lane 1: Rat Brain Tissue Lysate

Lane 2: Rat Kidney Tissue Lysate

After Electrophoresis, proteins were transferred to a Nitrocellulose membrane at 150mA for 50-90 minutes. Blocked the membrane with 5% Non-fat Milk/ TBS for 1.5 hour at RT. The membrane was incubated with rabbit anti-Calbindin antigen affinity purified polyclonal antibody (Catalog # PB9045) at 0.5 ug/mL overnight at 4°C, then washed with TBS-0.1%Tween 3 times with 5 minutes each and probed with a goat anti-rabbit IgG-HRP secondary antibody at a dilution of 1:10000 for 1.5 hour at RT. The signal is developed using an Enhanced Chemiluminescent detection (ECL) kit (Catalog # EK1002) with Tanon 5200 system. A specific band was detected for Calbindin at approximately 37KD. The expected band size for Calbindin is at 30KD.

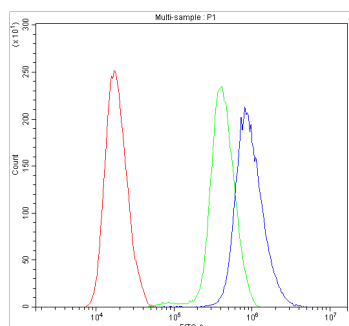


Figure 6. Flow Cytometry analysis of SiHa cells using anti-Calbindin antibody (PB9045).

Overlay histogram showing SiHa cells stained with PB9045 (Blue line). The cells were blocked with 10% normal goat serum. And then incubated with rabbit anti-Calbindin Antibody (PB9045, 1ug/1x10⁶ cells) for 30 min at 20°C. DyLight®488 conjugated goat anti-rabbit IgG (BA1127, 5-10ug/1x10⁶ cells) was used as secondary antibody for 30 minutes at 20°C. Isotype control antibody (Green line) was rabbit IgG (1ug/1x10⁶) used under the same conditions. Unlabelled sample (Red line) was also used as a control.

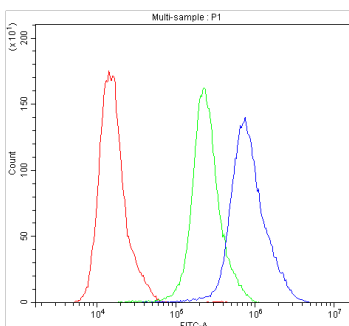


Figure 7. Flow Cytometry analysis of Hela cells using anti-Calbindin antibody (PB9045).

Overlay histogram showing Hela cells stained with PB9045 (Blue line). The cells were blocked with 10% normal goat serum. And then incubated with rabbit anti-Calbindin Antibody (PB9045, 1ug/1x10⁶ cells) for 30 min at 20°C. DyLight®488 conjugated goat anti-rabbit IgG (BA1127, 5-10ug/1x10⁶ cells) was used as secondary antibody for 30 minutes at 20°C. Isotype control antibody (Green line) was rabbit IgG (1ug/1x10⁶) used under the same conditions. Unlabelled sample (Red line) was also used as a control.

1 Publications Citing This Product

1. PubMed ID: 10.1016/j.phymed.2018.01.025, Icariside II ameliorates ibotenic acid-induced cognitive impairment and apoptotic response via modulation of MAPK pathway in rats

Visit bosterbio.com/anti-calbindin-picoband-trade-antibody-pb9045-boster.html to see all 1 publications.

Submit a product review to Biocompare.com

Submit a review of this product to Biocompare.com to receive a \$20 Amazon.com giftcard! Your reviews help your fellow scientists make the right decisions. Thank you for your contribution.



Anti-Calbindin/CALB1 Antibody [™]