

Anti-Leptin Receptor/LEPR Antibody Picoband™

Catalog Number: PB9056

About LEPR

Leptin receptor (or Obese receptor, OBR) is a single membrane-spanning receptor most related to the gp130 signal-transducing component of the IL-6 receptor, the G-CSF receptor, and the LIF receptor. OB-R mRNA is expressed not only in choroid plexus, but also in several other tissues, including hypothalamus. Leptin acts through the leptin receptor, a single-transmembrane domain receptor of the cytokine-receptor family. Leptin controls energy balance and food intake through the leptin receptor in the hypothalamus of the brain, which suggests that some polymorphisms of the leptin receptor gene (LEPR) might contribute to obesity or obesity-related diseases. Leptin is also involved in the regulation of blood pressure through the leptin receptor.

Overview

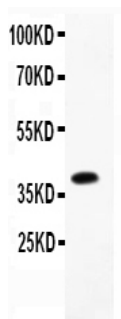
Product Name	Anti-Leptin Receptor/LEPR Antibody Picoband™
Reactive Species	Human
Description	Boster Bio Anti-Leptin Receptor/LEPR Antibody Picoband™ catalog # PB9056. Tested in WB applications. This antibody reacts with Human.
Application	WB
Clonality	Monoclonal BAM-10
Formulation	Each vial contains 5mg BSA, 0.9mg NaCl, 0.2mg Na ₂ HPO ₄ , 0.05mg NaN ₃ .
Storage Instructions	Store at -20°C for one year from date of receipt. After reconstitution, at 4°C for one month. It can also be aliquotted and stored frozen at -20°C for six months. Avoid repeated freeze-thaw cycles.
Host	Hamster
Uniprot ID	P48357

Technical Details

Immunogen	A synthetic peptide corresponding to a sequence at the C-terminus of human BRCA2, identical to the related rat sequence, and different from the related mouse sequence by one amino acid.
Predicted Reactive Species	Hamster
Recommended Detection Systems	Boster recommends Enhanced Chemiluminescent Kit with anti-Mouse IgG (EK1001) for Western blot.
Cross Reactivity	No cross reactivity with other proteins
Form	Lyophilized
Concentration	Add 0.2ml of distilled water will yield a concentration of 500ug/ml.

Purification	Immunogen Affinity Purified
Suggested Dilutions	<p>Dilute the sample so that the expected range of concentrations fall within the detection range of this kit.</p> <p>If the expected range of concentration is unknown, a pilot test should be conducted to decide the optimal dilution ratio for your samples.</p> <p>Some PubMed article(s) citing the expression level of this target are as follows:</p> <p>Boster Bio's internal QC testing used:</p> <p>Western blot, 0.1-0.5ug/ml, Human</p>

Anti-Leptin Receptor/LEPR Antibody Picoband™ (PB9056) Images



Anti-Leptin Receptor Picoband antibody, PB9056-1.jpg
All lanes: Anti-Leptin Receptor(PB9056) at 0.5ug/ml
WB: Recombinant Human Leptin Receptor Protein 0.5ng
Predicted bind size: 40KD
Observed bind size: 40KD

Submit a product review to Biocompare.com

Submit a review of this product to Biocompare.com to receive a \$20 Amazon.com giftcard! Your reviews help your fellow scientists make the right decisions. Thank you for your contribution.



Anti-Leptin Receptor/LEPR Antibody™