

Anti-Laminin/Lamc1/Lamc2/Lamc3 Antibody Picoband™

Catalog Number: PB9142

About Lamc1

Laminins are major proteins in the basal lamina (one of the layers of the basement membrane), a protein network foundation for most cells and organs. Laminins form independent networks and are associated with type IV collagen networks via entactin, fibronectin, and perlecan. They are important and biologically active parts of the basal lamina, influencing cell differentiation, migration, and adhesion, as well as phenotype and survival. Laminins are trimeric proteins that contain an alpha-chain, a beta-chain, and a gamma-chain, found in five, four, and three genetic variants, respectively. Laminins critically contribute to cell attachment and differentiation, cell shape and movement, maintenance of tissue phenotype, and promotion of tissue survival.

Overview

Product Name	Anti-Laminin/Lamc1/Lamc2/Lamc3 Antibody Picoband™
Reactive Species	Human
Description	Boster Bio Anti-Laminin/Lamc1/Lamc2/Lamc3 Antibody Picoband™ catalog # PB9142. Tested in IHC, IHC-F, WB applications. This antibody reacts with Human.
Application	IHC, IHC-F, WB
Clonality	Polyclonal
Formulation	Each vial contains 5mg BSA, 0.9mg NaCl, 0.2mg Na ₂ HPO ₄ , 0.05mg NaN ₃ .
Storage Instructions	Store at -20°C for one year from date of receipt. After reconstitution, at 4°C for one month. It can also be aliquotted and stored frozen at -20°C for six months. Avoid repeated freeze-thaw cycles.
Host	Rabbit
Uniprot ID	P02468

Technical Details

Immunogen	Peptide mixture of laminin gamma1,2,3 (DLNKLNEIEGTLNKAKDEMK; MSELEERARQQRGHLHLET; LQRKLSLLEQESQQELQIQ). Laminin gamma has only three subtypes of antibody to gamma1-3 reactive with all isoforms of laminin.
Predicted Reactive Species	Bovine, Horse, Monkey, Rabbit
Recommended Detection Systems	Boster recommends Enhanced Chemiluminescent Kit with anti-Rabbit IgG (EK1002) for Western blot, and HRP Conjugated anti-Rabbit IgG Super Vision Assay Kit (SV0002-1) for IHC(P) and IHC(F).
Cross Reactivity	No cross-reactivity with other proteins
Isotype	Rabbit IgG

Form	Lyophilized
Concentration	Adding 0.2 ml of distilled water will yield a concentration of 500 ug/ml.
Purification	Immunogen affinity purified.
Suggested Dilutions	<p>Dilute the sample so that the expected range of concentrations fall within the detection range of this kit.</p> <p>If the expected range of concentration is unknown, a pilot test should be conducted to decide the optimal dilution ratio for your samples.</p> <p>Some PubMed article(s) citing the expression level of this target are as follows:</p> <p>Boster Bio's internal QC testing used:</p> <p>Western blot, 0.1-0.5ug/ml, Human</p> <p>Immunohistochemistry (Paraffin-embedded Section), 0.5-1ug/ml, Human, By Heat</p> <p>Immunohistochemistry (Frozen Section), 0.5-1ug/ml, Human</p>

Anti-Laminin/Lamc1/Lamc2/Lamc3 Antibody Picoband™ (PB9142) Images



Figure 1. Western blot analysis of Laminin using anti-Laminin antibody (PB9142).

Electrophoresis was performed on a 5-20% SDS-PAGE gel at 70V (Stacking gel) / 90V (Resolving gel) for 2-3 hours. The sample well of each lane was loaded with 30 ug of sample under reducing conditions.

Lane 1: human Hela whole cell lysates,

Lane 2: human HepG2 whole cell lysates.

After electrophoresis, proteins were transferred to a nitrocellulose membrane at 150 mA for 50-90 minutes. Blocked the membrane with 5% non-fat milk/TBS for 1.5 hour at RT. The membrane was incubated with rabbit anti-Laminin antigen affinity purified polyclonal antibody (Catalog # PB9142) at 0.5 ug/mL overnight at 4°C, then washed with TBS-0.1%Tween 3 times with 5 minutes each and probed with a goat anti-rabbit IgG-HRP secondary antibody at a dilution of 1:5000 for 1.5 hour at RT. The signal is developed using an Enhanced Chemiluminescent detection (ECL) kit (Catalog # EK1002) with Tanon 5200 system. A specific band was detected for Laminin at approximately 177 kDa. The expected band size for Laminin is at 177 kDa.

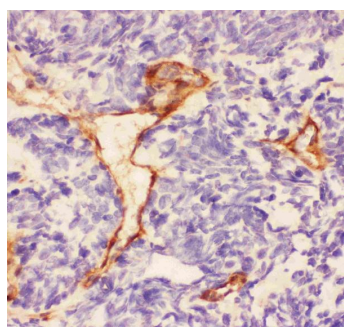


Figure 2. IHC analysis of Laminin using anti-Laminin antibody (PB9142).

Laminin was detected in a paraffin-embedded section of human lung cancer tissue. Heat mediated antigen retrieval was performed in EDTA buffer (pH 8.0, epitope retrieval solution). The tissue section was blocked with 10% goat serum. The tissue section was then incubated with 1 ug/ml rabbit anti-Laminin Antibody (PB9142) overnight at 4°C. Biotinylated goat anti-rabbit IgG was used as secondary antibody and incubated for 30 minutes at 37°C. The tissue section was developed using Streptavidin-Biotin-Complex (SABC) (Catalog # SA1022) with DAB as the chromogen.

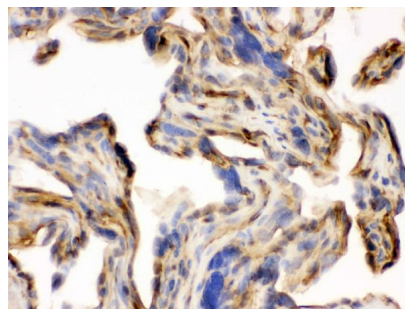


Figure 3. IHC analysis of Laminin using anti-Laminin antibody (PB9142).

Laminin was detected in frozen section of human placenta tissues. The tissue section was blocked with 10% goat serum. The tissue section was then incubated with 1ug/ml rabbit anti-Laminin Antibody (PB9142) overnight at 4°C. Biotinylated goat anti-rabbit IgG was used as secondary antibody and incubated for 30 minutes at 37°C. The tissue section was developed using Streptavidin-Biotin-Complex (SABC)(Catalog # SA1022) with DAB as the chromogen.

16 Publications Citing This Product

1. PubMed ID: 10.1016/j.apsusc.2010.01.042, Biocompatibility of pure titanium modified by human endothelial cell-derived extracellular matrix
2. PubMed ID: 23856441, Xu L, Zheng N, He Q, Li R, Zhang K, Liang T. Phytomedicine. 2013 Oct 15;20(13):1172-9. Doi: 10.1016/J.Phymed.2013.06.008. Epub 2013 Jul 13. Puerarin, Isolated From Pueraria Lobata (Willd.), Protects Against Hepatotoxicity Via Specific

Inhibition O...

3. PubMed ID: 25063144, Lin Cy, Li Lt, Su Wt. Mater Sci Eng C Mater Biol Appl. 2014 Sep;42:474-8. Doi: 10.1016/J.Msec.2014.05.063. Epub 2014 Jun 6. Three Dimensional Chitosan Scaffolds Influence The Extra Cellular Matrix Expression In Schwann Cells.

Visit bosterbio.com/anti-laminin-picoband-trade-antibody-pb9142-boster.html to see all 16 publications.

Submit a product review to Biocompare.com

Submit a review of this product to Biocompare.com to receive a \$20 Amazon.com giftcard! Your reviews help your fellow scientists make the right decisions. Thank you for your contribution.



Anti-Laminin/Lamc1/Lamc2/Lamc3 Antibody TM