

## Anti-MCM7 Antibody Picoband™

Catalog Number: PB9261

### About MCM7

MCM7 (Minichromosome Maintenance, s. Cerevisiae, homolog of, 7), also called CDC47, FORMERLY, is one of the highly conserved mini-chromosome maintenance proteins (MCM) that are essential for the initiation of eukaryotic genome replication. The MCM7 gene is mapped to 7q22.1. MCM7 plays a pivotal role in the G1/S phase transition, orchestrating the correct assembly of replication forks on chromosomal DNA and ensuring that all the genome is replicated once and not more than once at each cell cycle. The MCM7 gene contains 15 exons. The miRNAs MIR106B, MIR93, and MIR25 are clustered in a 5-prime to 3-prime orientation within intron 13. It has been found that MCM7 and the precursors of microRNAs (miRNAs) MIR106B, MIR93, and MIR25, all of which arise from intron 13 of the MCM7 gene, were overexpressed with almost perfect correlation in 5 of 10 human gastric tumors.

### Overview

Product Name	Anti-MCM7 Antibody Picoband™
Reactive Species	Human, Mouse, Rat
Description	Boster Bio Anti-MCM7 Antibody Picoband™ catalog # PB9261. Tested in Flow Cytometry, IF, IHC, ICC, WB applications. This antibody reacts with Human, Mouse, Rat.
Application	Flow Cytometry, IF, IHC, ICC, WB
Clonality	Polyclonal
Formulation	Each vial contains 5mg BSA, 0.9mg NaCl, 0.2mg Na2HPO4, 0.05mg NaN3.
Storage Instructions	Store at -20°C for one year from date of receipt. After reconstitution, at 4°C for one month. It can also be aliquotted and stored frozen at -20°C for six months. Avoid repeated freeze-thaw cycles.
Host	Rabbit
Uniprot ID	P33993

### Technical Details

Immunogen	E.coli-derived human MCM7 recombinant protein (Position: D526-V719). Human MCM7 shares 94% amino acid (aa) sequence identity with mouse MCM7.
Predicted Reactive Species	Hamster
Recommended Detection Systems	Boster recommends Enhanced Chemiluminescent Kit with anti-Rabbit IgG (EK1002) for Western blot, and HRP Conjugated anti-Rabbit IgG Super Vision Assay Kit (SV0002-1) for IHC(P) and ICC.
Cross Reactivity	No cross-reactivity with other proteins
Isotype	Rabbit IgG

Form	Lyophilized
Concentration	Adding 0.2 ml of distilled water will yield a concentration of 500 ug/ml.
Purification	Immunogen affinity purified.
Suggested Dilutions	<p>Dilute the sample so that the expected range of concentrations fall within the detection range of this kit.</p> <p>If the expected range of concentration is unknown, a pilot test should be conducted to decide the optimal dilution ratio for your samples.</p> <p>Some PubMed article(s) citing the expression level of this target are as follows:</p> <p>Boster Bio's internal QC testing used:</p> <p>Western blot, 0.1-0.5ug/ml, Human, Mouse, Rat</p> <p>Immunohistochemistry (Paraffin-embedded Section), 0.5-1ug/ml, Human, Mouse, Rat, By Heat</p> <p>Immunocytochemistry, 0.5-1ug/ml, Human</p> <p>Immunocytochemistry/Immunofluorescence, 2ug/ml, Human</p> <p>Immunofluorescence, 2ug/ml, Human</p> <p>Flow Cytometry, 1-3ug/1x10<sup>6</sup> cells, Human</p>

## Anti-MCM7 Antibody Picoband™ (PB9261) Images

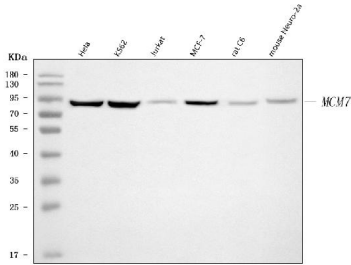


Figure 1. Western blot analysis of MCM7 using anti-MCM7 antibody (PB9261).

Electrophoresis was performed on a 5-20% SDS-PAGE gel at 70V (Stacking gel) / 90V (Resolving gel) for 2-3 hours. The sample well of each lane was loaded with 30 ug of sample under reducing conditions.

Lane 1: human Hela whole cell lysates,  
Lane 2: human K562 whole cell lysates,  
Lane 3: human Jurkat whole cell lysates,  
Lane 4: human MCF-7 whole cell lysates,  
Lane 5: rat C6 whole cell lysates,  
Lane 6: mouse Neuro-2a whole cell lysates.

After electrophoresis, proteins were transferred to a nitrocellulose membrane at 150 mA for 50-90 minutes. Blocked the membrane with 5% non-fat milk/TBS for 1.5 hour at RT. The membrane was incubated with rabbit anti-MCM7 antigen affinity purified polyclonal antibody (Catalog # PB9261) at 0.5 ug/mL overnight at 4°C, then washed with TBS-0.1%Tween 3 times with 5 minutes each and probed with a goat anti-rabbit IgG-HRP secondary antibody at a dilution of 1:5000 for 1.5 hour at RT. The signal is developed using an Enhanced Chemiluminescent detection (ECL) kit (Catalog # EK1002) with Tanon 5200 system. A specific band was detected for MCM7 at approximately 81 kDa. The expected band size for MCM7 is at 81 kDa.

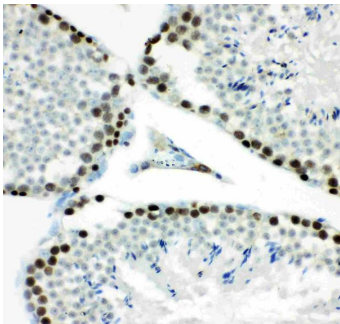


Figure 2. IHC analysis of MCM7 using anti-MCM7 antibody (PB9261).

MCM7 was detected in a paraffin-embedded section of Mouse Testis tissue. Heat mediated antigen retrieval was performed in EDTA buffer (pH 8.0, epitope retrieval solution). The tissue section was blocked with 10% goat serum. The tissue section was then incubated with 1 ug/ml rabbit anti-MCM7 Antibody (PB9261) overnight at 4°C. Biotinylated goat anti-rabbit IgG was used as secondary antibody and incubated for 30 minutes at 37°C. The tissue section was developed using Streptavidin-Biotin-Complex (SABC) (Catalog # SA1022) with DAB as the chromogen.

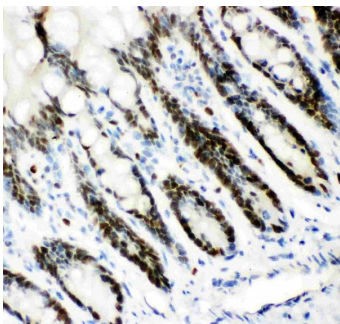


Figure 3. IHC analysis of MCM7 using anti-MCM7 antibody (PB9261).

MCM7 was detected in a paraffin-embedded section of Rat Intestine tissue. Heat mediated antigen retrieval was performed in EDTA buffer (pH 8.0, epitope retrieval solution). The tissue section was blocked with 10% goat serum. The tissue section was then incubated with 1 ug/ml rabbit anti-MCM7 Antibody (PB9261) overnight at 4°C. Biotinylated goat anti-rabbit IgG was used as secondary antibody and incubated for 30 minutes at 37°C. The tissue section was developed using Streptavidin-Biotin-Complex (SABC) (Catalog # SA1022) with DAB as the chromogen.

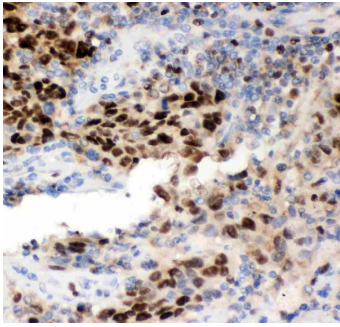


Figure 4. IHC analysis of MCM7 using anti-MCM7 antibody (PB9261).  
MCM7 was detected in a paraffin-embedded section of Human Lung Cancer tissue. Heat mediated antigen retrieval was performed in EDTA buffer (pH 8.0, epitope retrieval solution). The tissue section was blocked with 10% goat serum. The tissue section was then incubated with 1 ug/ml rabbit anti-MCM7 Antibody (PB9261) overnight at 4°C. Biotinylated goat anti-rabbit IgG was used as secondary antibody and incubated for 30 minutes at 37°C. The tissue section was developed using Streptavidin-Biotin-Complex (SABC) (Catalog # SA1022) with DAB as the chromogen.

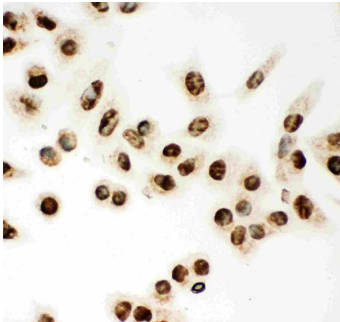


Figure 5. IHC analysis of MCM7 using anti-MCM7 antibody (PB9261).  
MCM7 was detected in immunocytochemical section of A549 cell. Enzyme antigen retrieval was performed using IHC enzyme antigen retrieval reagent (AR0022) for 15 mins. The cells were blocked with 10% goat serum. And then incubated with 1ug/ml rabbit anti-MCM7 Antibody (PB9261) overnight at 4°C. Biotinylated goat anti-rabbit IgG was used as secondary antibody and incubated for 30 minutes at 37°C. The section was developed using Streptavidin-Biotin-Complex (SABC)(Catalog # SA1022) with DAB as the chromogen.

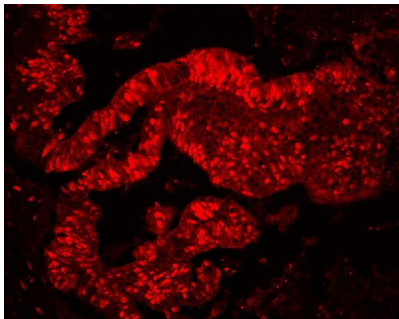


Figure 6. IF analysis of MCM7 using anti-MCM7 antibody (PB9261)  
MCM7 was detected in paraffin-embedded section of human colon cancer tissues. Heat mediated antigen retrieval was performed in citrate buffer (pH6, epitope retrieval solution ) for 20 mins. The tissue section was blocked with 10% goat serum. The tissue section was then incubated with 2ug/mL rabbit anti-MCM7 Antibody (PB9261) overnight at 4°C. Cy3 Conjugated Goat Anti-Rabbit IgG (BA1032) was used as secondary antibody at 1:100 dilution and incubated for 30 minutes at 37°C. The section was counterstained with DAPI. Visualize using a fluorescence microscope and filter sets appropriate for the label used.

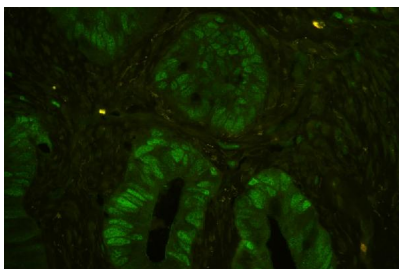
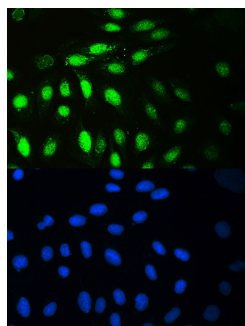


Figure 7. IF analysis of MCM7 using anti-MCM7 antibody (PB9261).  
MCM7 was detected in paraffin-embedded section of human colon cancer tissues. Heat mediated antigen retrieval was performed in citrate buffer (pH6, epitope retrieval solution ) for 20 mins. The tissue section was blocked with 10% goat serum. The tissue section was then incubated with 2ug/mL rabbit anti-MCM7 Antibody (PB9261) overnight at 4°C. FITC Conjugated Goat Anti-Rabbit IgG (BA1105) was used as secondary antibody at 1:100 dilution and incubated for 30 minutes at 37°C. The section was counterstained with DAPI. Visualize using a fluorescence microscope and filter sets appropriate for the label used.

Figure 8. IF analysis of MCM7 using anti-MCM7 antibody (PB9261).



MCM7 was detected in immunocytochemical section of U2OS cells. Enzyme antigen retrieval was performed using IHC enzyme antigen retrieval reagent (AR0022) for 15 mins. The cells were blocked with 10% goat serum. And then incubated with 2ug/mL rabbit anti-MCM7 Antibody (PB9261) overnight at 4°C. DyLight®488 Conjugated Goat Anti-Rabbit IgG (BA1127) was used as secondary antibody at 1:100 dilution and incubated for 30 minutes at 37°C. The section was counterstained with DAPI. Visualize using a fluorescence microscope and filter sets appropriate for the label used.

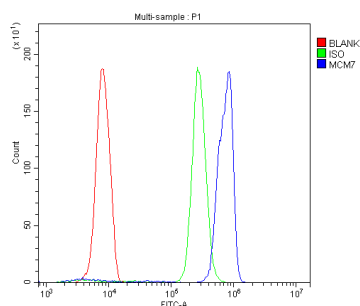


Figure 9. Flow Cytometry analysis of U937 cells using anti-MCM7 antibody (PB9261).

Overlay histogram showing U937 cells stained with PB9261 (Blue line). The cells were blocked with 10% normal goat serum. And then incubated with rabbit anti-MCM7 Antibody (PB9261, 1ug/1x10<sup>6</sup> cells) for 30 min at 20°C. DyLight®488 conjugated goat anti-rabbit IgG (BA1127, 5-10ug/1x10<sup>6</sup> cells) was used as secondary antibody for 30 minutes at 20°C. Isotype control antibody (Green line) was rabbit IgG (1ug/1x10<sup>6</sup>) used under the same conditions. Unlabelled sample (Red line) was also used as a control.

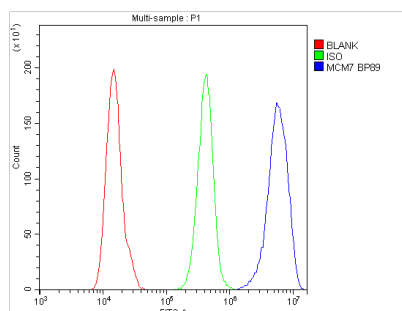


Figure 10. Flow Cytometry analysis of A431 cells using anti-MCM7 antibody (PB9261).

Overlay histogram showing A431 cells stained with PB9261 (Blue line). The cells were blocked with 10% normal goat serum. And then incubated with rabbit anti-MCM7 Antibody (PB9261, 1ug/1x10<sup>6</sup> cells) for 30 min at 20°C. DyLight488 conjugated goat anti-rabbit IgG (BA1127, 5-10ug/1x10<sup>6</sup> cells) was used as secondary antibody for 30 minutes at 20°C. Isotype control antibody (Green line) was rabbit IgG (1ug/1x10<sup>6</sup>) used under the same conditions. Unlabelled sample (Red line) was also used as a control.

**Submit a product review to Biocompare.com**

Submit a review of this product to Biocompare.com to receive a \$20 Amazon.com giftcard! Your reviews help your fellow scientists make the right decisions. Thank you for your contribution.



Anti-MCM7 Antibody <sup>™</sup>