

Anti-LRRK2 Antibody Picoband™

Catalog Number: PB9281

About LRRK2

Leucine-rich repeat kinase 2 (LRRK2), also known as dardarin, is an enzyme that in humans is encoded by the PARK8 gene. It is a member of the leucine-rich repeat kinase family. This gene is mapped to 12q12. The protein is present largely in the cytoplasm but also associates with the mitochondrial outer membrane. Expression of mutant LRRK2 induced apoptotic cell death in neuroblastoma cells and in mouse cortical neurons. It has been determined that LRRK2 possesses mixed-lineage kinase activity, and LRRK2 also showed autophosphorylation activity. What's more, LRRK2 has an affinity for lipids or lipid-associated proteins and may play a role in the biogenesis or regulation of membranous intracellular structures in the brain. It is also an IFNG target gene that may be involved in signaling pathways relevant to Crohn disease.

Overview

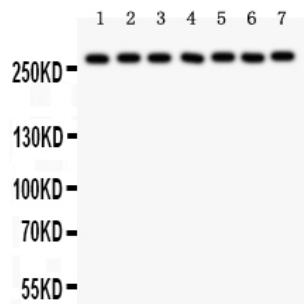
Product Name	Anti-LRRK2 Antibody Picoband™
Reactive Species	Human, Mouse, Rat
Description	Boster Bio Anti-LRRK2 Antibody Picoband™ catalog # PB9281. Tested in WB applications. This antibody reacts with Human, Mouse, Rat.
Application	WB
Clonality	Polyclonal
Formulation	Each vial contains 5mg BSA, 0.9mg NaCl, 0.2mg Na ₂ HPO ₄ , 0.05mg NaN ₃ .
Storage Instructions	Store at -20°C for one year from date of receipt. After reconstitution, at 4°C for one month. It can also be aliquotted and stored frozen at -20°C for six months. Avoid repeated freeze-thaw cycles.
Host	Rabbit
Uniprot ID	Q5S007

Technical Details

Immunogen	E.coli-derived human LRRK2 recombinant protein (Position: E10-L350). Human LRRK2 shares 82% amino acid (aa) sequence identity with mouse LRRK2.
Predicted Reactive Species	Bovine, Canine, Chicken, Monkey, Rabbit
Recommended Detection Systems	Boster recommends Enhanced Chemiluminescent Kit with anti-Rabbit IgG (EK1002) for Western blot.
Cross Reactivity	No cross-reactivity with other proteins
Isotype	Rabbit IgG
Form	Lyophilized

Concentration	Adding 0.2 ml of distilled water will yield a concentration of 500 ug/ml.
Purification	Immunogen affinity purified.
Suggested Dilutions	<p>Dilute the sample so that the expected range of concentrations fall within the detection range of this kit.</p> <p>If the expected range of concentration is unknown, a pilot test should be conducted to decide the optimal dilution ratio for your samples.</p> <p>Some PubMed article(s) citing the expression level of this target are as follows:</p> <p>Boster Bio's internal QC testing used:</p> <p>Western blot, 0.1-0.5ug/ml, Human, Mouse, Rat</p>

Anti-LRRK2 Antibody Picoband™ (PB9281) Images



Anti-LRRK2 Picoband antibody, PB9281, Western blotting

All lanes: Anti LRRK2 (PB9281) at 0.5ug/ml

Lane 1: Rat Brain Tissue Lysate at 50ug

Lane 2: Mouse Brain Tissue Lysate at 50ug

Lane 3: Rat Liver Tissue Lysate at 50ug

Lane 4: U87 Whole Cell Lysate at 40ug

Lane 5: NEURO Whole Cell Lysate at 40ug

Lane 6: A549 Whole Cell Lysate at 40ug

Lane 7: SMMC Whole Cell Lysate at 40ug

Predicted bind size: 286KD

Observed bind size: 286 KD

Submit a product review to Biocompare.com

Submit a review of this product to Biocompare.com to receive a \$20 Amazon.com giftcard! Your reviews help your fellow scientists make the right decisions. Thank you for your contribution.



Anti-LRRK2 Antibody™