

Anti-Phospholipase C beta 1/PLCB1 Antibody Picoband™

Catalog Number: PB9346

About PLCB1

PLCB1 is also known as PLC-I, EIEE12 or PLC154. The protein encoded by this gene catalyzes the formation of inositol 1,4,5-trisphosphate and diacylglycerol from phosphatidylinositol 4,5-bisphosphate. This reaction uses calcium as a cofactor and plays an important role in the intracellular transduction of many extracellular signals. This gene is activated by two G-protein alpha subunits, alpha-q and alpha-11. Two transcript variants encoding different isoforms have been found for this gene.

Overview

Product Name	Anti-Phospholipase C beta 1/PLCB1 Antibody Picoband™
Reactive Species	Human, Mouse, Rat
Description	Boster Bio Anti-Phospholipase C beta 1/PLCB1 Antibody Picoband™ catalog # PB9346. Tested in WB applications. This antibody reacts with Human, Mouse, Rat.
Application	WB
Clonality	Polyclonal WH-3
Formulation	Each vial contains 5mg BSA, 0.9mg NaCl, 0.2mg Na ₂ HPO ₄ , 0.05mg NaN ₃ .
Storage Instructions	Store at -20°C for one year from date of receipt. After reconstitution, at 4°C for one month. It can also be aliquotted and stored frozen at -20°C for six months. Avoid repeated freeze-thaw cycles.
Host	Rabbit
Uniprot ID	Q9NQ66

Technical Details

Immunogen	E.coli-derived human PLCB1 recombinant protein (Position: V888-E1059). Human PLCB1 shares 99% amino acid (aa) sequence identity with both mouse and rat PLCB1.
Predicted Reactive Species	Bovine, Canine, Chicken, Horse, Monkey, Rabbit
Recommended Detection Systems	Boster recommends Enhanced Chemiluminescent Kit with anti-Rabbit IgG (EK1002) for Western blot.
Cross Reactivity	No cross reactivity with other proteins
Form	Lyophilized
Concentration	Adding 0.2 ml of distilled water will yield a concentration of 500 ug/ml.
Purification	Immunogen affinity purified.

Suggested Dilutions

Dilute the sample so that the expected range of concentrations fall within the detection range of this kit.

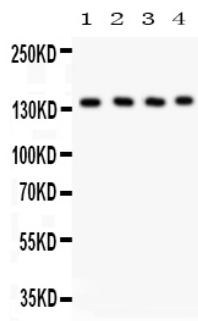
If the expected range of concentration is unknown, a pilot test should be conducted to decide the optimal dilution ratio for your samples.

Some PubMed article(s) citing the expression level of this target are as follows:

Boster Bio's internal QC testing used:

Western blot, 0.1-0.5ug/ml, Human, Mouse, Rat

Anti-Phospholipase C beta 1/PLCB1 Antibody Picoband™ (PB9346) Images



Anti-PLCB1 Picoband antibody, PB9346, Western blotting

All lanes: Anti PLCB1 (PB9346) at 0.5ug/ml

Lane 1: Rat Brain Tissue Lysate at 50ug

Lane 2: Mouse Brain Tissue Lysate at 50ug

Lane 3: Mouse Testis Tissue Lysate at 50ug

Lane 4: Human Placenta Tissue Lysate at 50ug

Predicted bind size: 139KD

Observed bind size: 139KD

Submit a product review to Biocompare.com

Submit a review of this product to Biocompare.com to receive a \$20 Amazon.com giftcard! Your reviews help your fellow scientists make the right decisions. Thank you for your contribution.



Anti-Phospholipase C beta 1/PLCB1 Antibody™