

Anti-Semaphorin 3A/SEMA3A Antibody Picoband™

Catalog Number: PB9353

About SEMA3A

SEMA3A is also known as COLL1, SEMA1 or SEMAL. This gene is a member of the semaphorin family and encodes a protein with an Ig-like C2-type (immunoglobulin-like) domain, a PSI domain and a Sema domain. This secreted protein can function as either a chemorepulsive agent, inhibiting axonal outgrowth, or as a chemoattractive agent, stimulating the growth of apical dendrites. In both cases, the protein is vital for normal neuronal pattern development. Increased expression of this protein is associated with schizophrenia and is seen in a variety of human tumor cell lines. Also, aberrant release of this protein is associated with the progression of Alzheimer's disease.

Overview

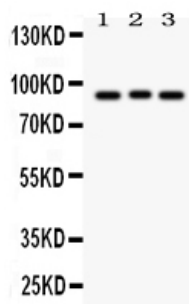
| | |
|----------------------|---|
| Product Name | Anti-Semaphorin 3A/SEMA3A Antibody Picoband™ |
| Reactive Species | Human |
| Description | Boster Bio Anti-Semaphorin 3A/SEMA3A Antibody Picoband™ catalog # PB9353. Tested in WB applications. This antibody reacts with Human. |
| Application | WB |
| Clonality | Polyclonal |
| Formulation | Each vial contains 5mg BSA, 0.9mg NaCl, 0.2mg Na2HPO4, 0.05mg NaN3. |
| Storage Instructions | Store at -20°C for one year from date of receipt. After reconstitution, at 4°C for one month. It can also be aliquotted and stored frozen at -20°C for six months. Avoid repeated freeze-thaw cycles. |
| Host | Rabbit |
| Uniprot ID | Q14563 |

Technical Details

| | |
|-------------------------------|--|
| Immunogen | E.coli-derived human Semaphorin 3A recombinant protein (Position: K550-V771). Human Semaphorin 3A shares 93% and 94% amino acid (aa) sequence identity with mouse and rat Semaphorin 3A, respectively. |
| Predicted Reactive Species | Hamster |
| Recommended Detection Systems | Boster recommends Enhanced Chemiluminescent Kit with anti-Rabbit IgG (EK1002) for Western blot. |
| Cross Reactivity | No cross-reactivity with other proteins. |
| Isotype | Rabbit IgG |
| Form | Lyophilized |

| | |
|---------------------|--|
| Concentration | Adding 0.2 ml of distilled water will yield a concentration of 500 ug/ml. |
| Purification | Immunogen affinity purified. |
| Suggested Dilutions | <p>Dilute the sample so that the expected range of concentrations fall within the detection range of this kit.</p> <p>If the expected range of concentration is unknown, a pilot test should be conducted to decide the optimal dilution ratio for your samples.</p> <p>Some PubMed article(s) citing the expression level of this target are as follows:</p> <p>Boster Bio's internal QC testing used:</p> <p>Western blot, 0.1-0.5ug/ml, Human</p> |

Anti-Semaphorin 3A/SEMA3A Antibody Picoband™ (PB9353) Images



Anti-Semaphorin 3A Picoband antibody, PB9353, Western blotting

All lanes: Anti Semaphorin 3A (PB9353) at 0.5ug/ml

Lane 1: 293T Whole Cell Lysate at 40ug

Lane 2: A549 Whole Cell Lysate at 40ug

Lane 3: HELA Whole Cell Lysate at 40ug

Predicted bind size: 89KD

Observed bind size: 89KD

1 Publications Citing This Product

1. PubMed ID: 24765144, Zhou H, Wu A, Fu W, Lv Z, Zhang Z. Oncol Lett. 2014 May;7(5):1395-1400. Epub 2014 Feb 27. Significance Of Semaphorin-3A And Mmp-14 Protein Expression In Non-Small Cell Lung Cancer.

Visit bosterbio.com/anti-semaphorin-3a-picoband-trade-antibody-pb9353-boster.html to see all 1 publications.

Submit a product review to Biocompare.com

Submit a review of this product to Biocompare.com to receive a \$20 Amazon.com giftcard! Your reviews help your fellow scientists make the right decisions. Thank you for your contribution.



Anti-Semaphorin 3A/SEMA3A Antibody™