

Anti-TAB1 Antibody Picoband™

Catalog Number: PB9445

About TAB1

Mitogen-activated protein kinase kinase kinase 7-interacting protein 1, also called TAB1, is an enzyme that in humans is encoded by the MAP3K7IP1 gene. It is mapped to 22q13.1. The protein encoded by this gene was identified as a regulator of the MAP kinase kinase kinase MAP3K7/TAK1, which is known to mediate various intracellular signaling pathways. This protein can interact with and activate the mitogen-activated protein kinase 14 (MAPK14/p38alpha), and thus represents an alternative activation pathway, in addition to the MAPKK pathways, which contributes to the biological responses of MAPK14 to various stimuli. TAB1 also can activate the kinase activity of TAK1 by direct interaction, and it may be an important signaling intermediate between TGFβ receptors and TAK1. What's more, TAB1 plays an important role in skin homeostasis, wound repair, and oncogenesis.

Overview

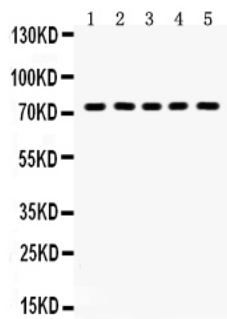
Product Name	Anti-TAB1 Antibody Picoband™
Reactive Species	Human, Rat
Description	Boster Bio Anti-TAB1 Antibody Picoband™ catalog # PB9445. Tested in WB applications. This antibody reacts with Human, Rat.
Application	WB
Clonality	Polyclonal WH-3
Formulation	Each vial contains 5mg BSA, 0.9mg NaCl, 0.2mg Na ₂ HPO ₄ , 0.05mg NaN ₃ .
Storage Instructions	Store at -20°C for one year from date of receipt. After reconstitution, at 4°C for one month. It can also be aliquotted and stored frozen at -20°C for six months. Avoid repeated freeze-thaw cycles.
Host	Rabbit
Uniprot ID	Q15750

Technical Details

Immunogen	A synthetic peptide corresponding to a sequence at the N-terminus of human TAB1, different from the related mouse sequence by two amino acids.
Predicted Reactive Species	Bovine, Canine, Chicken, Horse, Monkey, Rabbit
Recommended Detection Systems	Boster recommends Enhanced Chemiluminescent Kit with anti-Rabbit IgG (EK1002) for Western blot.
Cross Reactivity	No cross reactivity with other proteins
Form	Lyophilized

Concentration	Add 0.2ml of distilled water will yield a concentration of 500ug/ml.
Purification	Immunogen affinity purified.
Suggested Dilutions	<p>Dilute the sample so that the expected range of concentrations fall within the detection range of this kit.</p> <p>If the expected range of concentration is unknown, a pilot test should be conducted to decide the optimal dilution ratio for your samples.</p> <p>Some PubMed article(s) citing the expression level of this target are as follows:</p> <p>Boster Bio's internal QC testing used:</p> <p>Western blot, 0.1-0.5ug/ml, Human, Rat</p>

Anti-TAB1 Antibody Picoband™ (PB9445) Images



Anti-TAB1 Picoband antibody, PB9445, Western blotting

All lanes: Anti TAB1 (PB9445) at 0.5ug/ml

Lane 1: Rat Liver Tissue Lysate at 50ug

Lane 2: Rat Lung Tissue Lysate at 50ug

Lane 3: HELA Whole Cell Lysate at 40ug

Lane 4: A549 Whole Cell Lysate at 40ug

Lane 5: JURKAT Whole Cell Lysate at 40ug

Predicted bind size: 55KD

Observed bind size: 72KD

Submit a product review to Biocompare.com

Submit a review of this product to Biocompare.com to receive a \$20 Amazon.com giftcard! Your reviews help your fellow scientists make the right decisions. Thank you for your contribution.



Anti-TAB1 Antibody™