

Anti-IRF5 Antibody Picoband™

Catalog Number: PB9646

About IRF5

Interferon regulatory factor 5, also called IRF5 or SLEB10, is a protein that in humans is encoded by the IRF5 gene. IRF5 gene is mapped to 7q32.1. This gene encodes a member of the interferon regulatory factor (IRF) family, a group of transcription factors with diverse roles, including virus-mediated activation of interferon, and modulation of cell growth, differentiation, apoptosis, and immune system activity. Members of the IRF family are characterized by a conserved N-terminal DNA-binding domain containing tryptophan (W) repeats. Multiple transcript variants encoding different isoforms have been found for this gene, and a 30-nt indel polymorphism (SNP rs60344245) can result in loss of a 10-aa segment. This gene is a transcription factor involved in the induction of interferons IFNA and INFB and inflammatory cytokines upon virus infection.

Overview

Product Name	Anti-IRF5 Antibody Picoband™
Reactive Species	Human, Mouse, Rat
Description	Boster Bio Anti-IRF5 Antibody Picoband™ catalog # PB9646. Tested in IHC, WB applications. This antibody reacts with Human, Mouse, Rat.
Application	IHC, WB
Clonality	Polyclonal
Formulation	Each vial contains 5mg BSA, 0.9mg NaCl, 0.2mg Na2HPO4, 0.05mg NaN3.
Storage Instructions	Store at -20°C for one year from date of receipt. After reconstitution, at 4°C for one month. It can also be aliquotted and stored frozen at -20°C for six months. Avoid repeated freeze-thaw cycles.
Host	Rabbit
Uniprot ID	Q13568

Technical Details

Immunogen	A synthetic peptide corresponding to a sequence at the C-terminus of human IRF5, different from the related mouse sequence by three amino acids.
Predicted Reactive Species	Hamster
Recommended Detection Systems	Boster recommends Enhanced Chemiluminescent Kit with anti-Rabbit IgG (EK1002) for Western blot, and HRP Conjugated anti-Rabbit IgG Super Vision Assay Kit (SV0002-1) for IHC(P).
Cross Reactivity	No cross-reactivity with other proteins
Isotype	Rabbit IgG
Form	Lyophilized

Concentration	Adding 0.2 ml of distilled water will yield a concentration of 500 ug/ml.
Purification	Immunogen affinity purified.
Suggested Dilutions	<p>Dilute the sample so that the expected range of concentrations fall within the detection range of this kit.</p> <p>If the expected range of concentration is unknown, a pilot test should be conducted to decide the optimal dilution ratio for your samples.</p> <p>Some PubMed article(s) citing the expression level of this target are as follows:</p> <p>Boster Bio's internal QC testing used:</p> <p>Immunohistochemistry (Paraffin-embedded Section), 0.5-1ug/ml, Human, Mouse, Rat, By Heat</p> <p>Western blot, 0.1-0.5ug/ml, Human, Mouse, Rat</p>

Anti-IRF5 Antibody Picoband™ (PB9646) Images

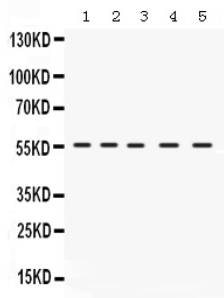


Figure 1. Western blot analysis of IRF5 using anti-IRF5 antibody (PB9646).

Electrophoresis was performed on a 5-20% SDS-PAGE gel at 70V (Stacking gel) / 90V (Resolving gel) for 2-3 hours.

Lane 1: Rat Intestine Tissue Lysate at 50ug,

Lane 2: HELA Whole Cell Lysate at 40ug,

Lane 3: COLO320 Whole Cell Lysate at 40ug,

Lane 4: NIH3T3 Whole Cell Lysate at 40ug,

Lane 5: HEPA Whole Cell Lysate at 40ug.

After electrophoresis, proteins were transferred to a nitrocellulose membrane at 150 mA for 50-90 minutes. Blocked the membrane with 5% non-fat milk/TBS for 1.5 hour at RT. The membrane was incubated with rabbit anti-IRF5 antigen affinity purified polyclonal antibody (Catalog # PB9646) at 0.5 ug/mL overnight at 4°C, then washed with TBS-0.1%Tween 3 times with 5 minutes each and probed with a goat anti-rabbit IgG-HRP secondary antibody at a dilution of 1:5000 for 1.5 hour at RT. The signal is developed using an Enhanced Chemiluminescent detection (ECL) kit (Catalog # EK1002) with Tanon 5200 system. A specific band was detected for IRF5 at approximately 56 kDa. The expected band size for IRF5 is at 56 kDa.

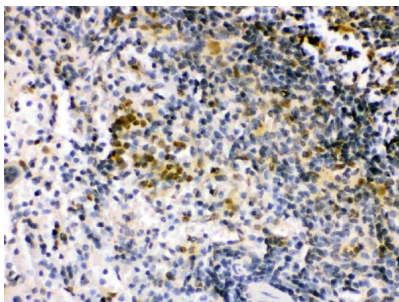


Figure 2. IHC analysis of IRF5 using anti-IRF5 antibody (PB9646).

IRF5 was detected in a paraffin-embedded section of mouse spleen tissue. Heat mediated antigen retrieval was performed in EDTA buffer (pH 8.0, epitope retrieval solution). The tissue section was blocked with 10% goat serum. The tissue section was then incubated with 1 ug/ml rabbit anti-IRF5 Antibody (PB9646) overnight at 4°C. Biotinylated goat anti-rabbit IgG was used as secondary antibody and incubated for 30 minutes at 37°C. The tissue section was developed using Streptavidin-Biotin-Complex (SABC) (Catalog # SA1022) with DAB as the chromogen.

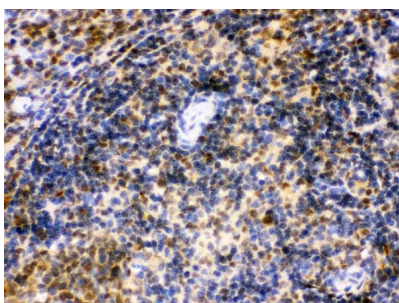
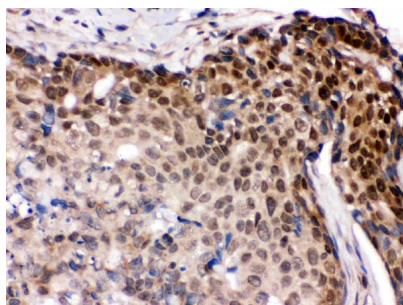


Figure 3. IHC analysis of IRF5 using anti-IRF5 antibody (PB9646).

IRF5 was detected in a paraffin-embedded section of rat spleen tissue. Heat mediated antigen retrieval was performed in EDTA buffer (pH 8.0, epitope retrieval solution). The tissue section was blocked with 10% goat serum. The tissue section was then incubated with 1 ug/ml rabbit anti-IRF5 Antibody (PB9646) overnight at 4°C. Biotinylated goat anti-rabbit IgG was used as secondary antibody and incubated for 30 minutes at 37°C. The tissue section was developed using Streptavidin-Biotin-Complex (SABC) (Catalog # SA1022) with DAB as the chromogen.

Figure 4. IHC analysis of IRF5 using anti-IRF5 antibody (PB9646).

IRF5 was detected in a paraffin-embedded section of human



mammary cancer tissue. Heat mediated antigen retrieval was performed in EDTA buffer (pH 8.0, epitope retrieval solution). The tissue section was blocked with 10% goat serum. The tissue section was then incubated with 1 ug/ml rabbit anti-IRF5 Antibody (PB9646) overnight at 4°C. Biotinylated goat anti-rabbit IgG was used as secondary antibody and incubated for 30 minutes at 37°C. The tissue section was developed using Streptavidin-Biotin-Complex (SABC) (Catalog # SA1022) with DAB as the chromogen.

Submit a product review to Biocompare.com

Submit a review of this product to Biocompare.com to receive a \$20 Amazon.com giftcard! Your reviews help your fellow scientists make the right decisions. Thank you for your contribution.



Anti-IRF5 Antibody [™]