

## Anti-NR2F2 Antibody Picoband™

Catalog Number: PB9729

### About NR2F2

COUP-TFII (COUP transcription factor 2), also known as NR2F2 (nuclear receptor subfamily 2, group F, member 2), is a protein that in humans is encoded by the NR2F2 gene. This gene encodes a member of the steroid thyroid hormone superfamily of nuclear receptors. The encoded protein is a ligand inducible transcription factor that is involved in the regulation of many different genes. Alternate splicing results in multiple transcript variants. COUP-TFII plays a critical role in controlling the development of a number of tissues and organs including heart, blood vessels, muscles and limbs.

### Overview

Product Name	Anti-NR2F2 Antibody Picoband™
Reactive Species	Human, Rat
Description	Boster Bio Anti-NR2F2 Antibody Picoband™ catalog # PB9729. Tested in IHC-P, WB applications. This antibody reacts with Human, Rat.
Application	IHC-P, WB
Clonality	Polyclonal BEF-20
Formulation	Each vial contains 4mg Trehalose, 0.9mg NaCl, 0.2mg Na <sub>2</sub> HPO <sub>4</sub> , 0.05mg NaN <sub>3</sub> .
Storage Instructions	Store at -20°C for one year from date of receipt. After reconstitution, at 4°C for one month. It can also be aliquotted and stored frozen at -20°C for six months. Avoid repeated freeze-thaw cycles.
Host	Rabbit
Uniprot ID	P24468

### Technical Details

Immunogen	A synthetic peptide corresponding to a sequence at the N-terminus of human NR2F2, identical to the related mouse and rat sequences.
Predicted Reactive Species	Bovine
Recommended Detection Systems	Boster recommends Enhanced Chemiluminescent Kit with anti-Rabbit IgG (EK1002) for Western blot.
Cross Reactivity	No cross reactivity with other proteins.
Form	Lyophilized
Concentration	Adding 0.2 ml of distilled water will yield a concentration of 500 ug/ml.
Purification	Immunogen affinity purified.

**Suggested Dilutions**

Dilute the sample so that the expected range of concentrations fall within the detection range of this kit.

If the expected range of concentration is unknown, a pilot test should be conducted to decide the optimal dilution ratio for your samples.

Some PubMed article(s) citing the expression level of this target are as follows:

Boster Bio's internal QC testing used:

Western blot, 0.1-0.5ug/ml, Human, Rat

Immunohistochemistry (Paraffin-embedded Section), 0.5-1ug/ml, Human, By Heat

## Anti-NR2F2 Antibody Picoband™ (PB9729) Images

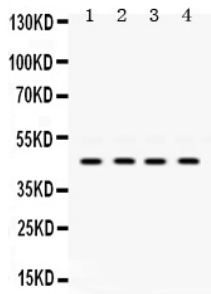


Figure 1. Western blot analysis of NR2F2 using anti-NR2F2 antibody (PB9729). Electrophoresis was performed on a 5-20% SDS-PAGE gel at 70V (Stacking gel) / 90V (Resolving gel) for 2-3 hours. Lane 1: Rat Liver Tissue Lysate at 50ug, Lane 2: HELA Whole Cell Lysate at 40ug, Lane 3: A431 Whole Cell Lysate at 40ug, Lane 4: SW620 Whole Cell Lysate at 40ug. After Electrophoresis, proteins were transferred to a Nitrocellulose membrane at 150mA for 50-90 minutes. Blocked the membrane with 5% Non-fat Milk/ TBS for 1.5 hour at RT. The membrane was incubated with rabbit anti-NR2F2 antigen affinity purified polyclonal antibody (Catalog # PB9729) at 0.5 ug/mL overnight at 4°C, then washed with TBS-0.1%Tween 3 times with 5 minutes each and probed with a goat anti-rabbit IgG-HRP secondary antibody at a dilution of 1:10000 for 1.5 hour at RT. The signal is developed using an Enhanced Chemiluminescent detection (ECL) kit (Catalog # EK1002) with Tanon 5200 system. A specific band was detected for NR2F2 at approximately 46KD. The expected band size for NR2F2 is at 46KD.

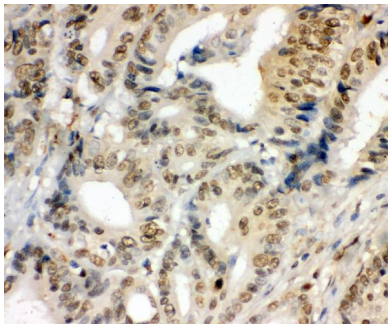


Figure 2. IHC analysis of NR2F2 using anti-NR2F2 antibody (PB9729). NR2F2 was detected in paraffin-embedded section of human intestinal cancer tissue. Heat mediated antigen retrieval was performed in citrate buffer (pH6, epitope retrieval solution) for 20 mins. The tissue section was blocked with 10% goat serum. The tissue section was then incubated with 1ug/ml rabbit anti-NR2F2 Antibody (PB9729) overnight at 4°C. Biotinylated goat anti-rabbit IgG was used as secondary antibody and incubated for 30 minutes at 37°C. The tissue section was developed using Streptavidin-Biotin-Complex (SABC)(Catalog # SA1022) with DAB as the chromogen.

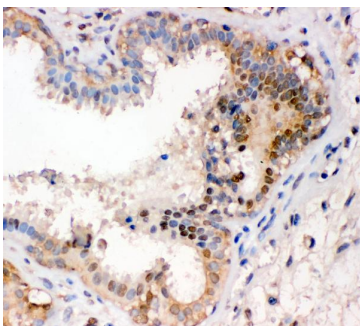


Figure 3. IHC analysis of NR2F2 using anti-NR2F2 antibody (PB9729). NR2F2 was detected in paraffin-embedded section of human mammary cancer tissue. Heat mediated antigen retrieval was performed in citrate buffer (pH6, epitope retrieval solution) for 20 mins. The tissue section was blocked with 10% goat serum. The tissue section was then incubated with 1ug/ml rabbit anti-NR2F2 Antibody (PB9729) overnight at 4°C. Biotinylated goat anti-rabbit IgG was used as secondary antibody and incubated for 30 minutes at 37°C. The tissue section was developed using Streptavidin-Biotin-Complex (SABC)(Catalog # SA1022) with DAB as the chromogen.

Submit a review of this product to Biocompare.com to receive a \$20 Amazon.com giftcard! Your reviews help your fellow scientists make the right decisions. Thank you for your contribution.



Anti-NR2F2 Antibody <sup>™</sup>