

Anti-EAAT1/SLC1A3 Antibody Picoband™

Catalog Number: PB9959

About SLC1A3

Solute carrier family 1 (glial high-affinity glutamate transporter), member 3, also known as SLC1A3, EAAT1 or GLAST, is a protein that in humans is encoded by the SLC1A3 gene. This gene is a member of high affinity glutamate transporter family. It is mapped to chromosome 5p13.2 by fluorescence in situ hybridization (FISH). And this gene transports L-glutamate and also L- and D-aspartate. It is essential for terminating the postsynaptic action of glutamate by rapidly removing released glutamate from the synaptic cleft. Furthermore, this gene acts as a symport by cotransporting sodium.

Overview

Product Name	Anti-EAAT1/SLC1A3 Antibody Picoband™
Reactive Species	Mouse, Rat
Description	Boster Bio Anti-EAAT1/SLC1A3 Antibody Picoband™ catalog # PB9959. Tested in WB applications. This antibody reacts with Mouse, Rat.
Application	WB
Clonality	Polyclonal
Formulation	Each vial contains 4 mg Trehalose, 0.9 mg NaCl and 0.2 mg Na ₂ HPO ₄ .
Storage Instructions	Store at -20°C for one year from date of receipt. After reconstitution, at 4°C for one month. It can also be aliquotted and stored frozen at -20°C for six months. Avoid repeated freeze-thaw cycles.
Host	Rabbit
Uniprot ID	P43003

Technical Details

Immunogen	A synthetic peptide corresponding to a sequence at the N-terminus of human EAAT1, different from the related mouse sequence by three amino acids, and identical to the related rat sequence.
Predicted Reactive Species	Hamster
Recommended Detection Systems	Boster recommends Enhanced Chemiluminescent Kit with anti-Rabbit IgG (EK1002) for Western blot.
Cross Reactivity	No cross-reactivity with other proteins
Isotype	Rabbit IgG
Form	Lyophilized
Concentration	Adding 0.2 ml of distilled water will yield a concentration of 500 ug/ml.

Purification	Immunogen affinity purified.
Suggested Dilutions	<p>Dilute the sample so that the expected range of concentrations fall within the detection range of this kit.</p> <p>If the expected range of concentration is unknown, a pilot test should be conducted to decide the optimal dilution ratio for your samples.</p> <p>Some PubMed article(s) citing the expression level of this target are as follows:</p> <p>Boster Bio's internal QC testing used:</p> <p>Western blot, 0.1-0.5ug/ml, Mouse, Rat</p>

Anti-EAAT1/SLC1A3 Antibody Picoband™ (PB9959) Images

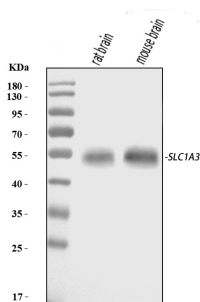


Figure 1. Western blot analysis of EAAT1/SLC1A3 using anti-EAAT1/SLC1A3 antibody (PB9959).

Electrophoresis was performed on a 5-20% SDS-PAGE gel at 70V (Stacking gel) / 90V (Resolving gel) for 2-3 hours. The sample well of each lane was loaded with 30 ug of sample under reducing conditions.

Lane 1: rat brain tissue lysates,

Lane 2: mouse brain tissue lysates.

After electrophoresis, proteins were transferred to a nitrocellulose membrane at 150 mA for 50-90 minutes. Blocked the membrane with 5% non-fat milk/TBS for 1.5 hour at RT. The membrane was incubated with rabbit anti-EAAT1/SLC1A3 antigen affinity purified polyclonal antibody (Catalog # PB9959) at 0.5 ug/mL overnight at 4°C, then washed with TBS-0.1%Tween 3 times with 5 minutes each and probed with a goat anti-rabbit IgG-HRP secondary antibody at a dilution of 1:5000 for 1.5 hour at RT. The signal is developed using an Enhanced Chemiluminescent detection (ECL) kit (Catalog # EK1002) with Tanon 5200 system. A specific band was detected for EAAT1/SLC1A3 at approximately 60 kDa. The expected band size for EAAT1/SLC1A3 is at 60 kDa.

1 Publications Citing This Product

1. PubMed ID: 25371754, Ding Y, Zhang K, Liu S, Zhang Q, Ma C, Bruce Ic, Zhang X. Exp Ther Med. 2014 Dec;8(6):1909-1913. Epub 2014 Oct 15. Tumor Necrosis Factor-?? Promotes The Expression Of Excitatory Amino-Acid Transporter 2 In Astrocytes: Optimal Concentration And Inc...

Visit bosterbio.com/anti-eaat1-picoband-trade-antibody-pb9959-boster.html to see all 1 publications.

Submit a product review to Biocompare.com

Submit a review of this product to Biocompare.com to receive a \$20 Amazon.com giftcard! Your reviews help your fellow scientists make the right decisions. Thank you for your contribution.



Anti-EAAT1/SLC1A3 Antibody™