



TLR3/ISRE Luciferase Reporter- HEK293 Cell Line

Catalog number: RC1023

This package insert must be read in its entirety before using this product.
For research use only. Not for use in diagnostic procedures.

TLR3/ISRE Luciferase Reporter-HEK293 Cell Line

Catalog Number: RC1023, **Storage:** Immediately upon receipt, store in liquid nitrogen. (Ship on dry ice.)

Contents: Each vial contains $2 \sim 3 \times 10^6$ cells in 1 ml of 90% FBS + 10% DMSO.

Description: The TLR3/ISRE [Luciferase cell line](#) is a stably transfected HEK 293 cell line which expresses full-length human Toll-like receptor 3 (TLR3) and Renilla luciferase reporter gene under the transcriptional control of the interferon stimulated response element (ISRE). Functional activity of the cell line has been validated by TLR3 ligand assay (Figure 1), in which upon activation by poly (I:C), TLR3 quickly initiates TRIF-dependent signaling pathway and mediates nuclear translocation of IRF3 that induces ISRE activity. The TLR3/ISRE activation by poly (I:C) is shown in Figure 1.

Applications: Functional Assay

Application Notes: Functional Assay, detecting the transcriptional activity of TLR3/ISRE

Application Details: Dilute the sample so that the expected range of concentrations fall within the detection range of this kit.

If the expected range of concentration is unknown, a pilot test should be conducted to decide the optimal dilution ratio for your samples.

Some PubMed article(s) citing the expression level of this target are as follows:

Boster Bio's internal QC testing used:

Application:

Monitor the TLR3 signaling pathway activity. Screen for activators or inhibitors of the TLR3 signaling pathway.

Culture conditions:

Cells should be grown at 37°C with 5% CO₂ using DMEM medium supplemented with 10% FBS and 1% Pen/Strep, plus 2 µg/ml Puromycin and 5 µg/ml blasticidin. It is recommended to quickly thaw the frozen cells upon receipt or from liquid nitrogen in a 37°C water-bath, transfer to a tube containing 10 ml of growth medium without Puromycin and Blasticidin, spin down cells, resuspend cells in pre-warmed growth medium without Puromycin and Blasticidin, transfer resuspended cells to T25 flask and culture in 37°C-CO₂ incubator. Leave the T25 flask in the incubator for 2~4 days without disturbing or changing the medium until cells completely recover viability and become adherent. Once cells are over 90% adherent, remove growth medium and passage the cells through trypsinization and centrifugation. At first passage, switch to growth medium containing Puromycin and Blasticidin. Cells should be split before they reach complete confluence. To passage the cells, detach cells from culture vessel with Trypsin/EDTA, add complete growth medium and transfer to a tube, spin down cells, resuspend cells and seed appropriate aliquots of cells suspension into new culture vessels. Subcultivation ration = 1:10 to 1:20 weekly.

Functional validation:

A. Response of TLR3/ISRE – HEK293 cells to Poly (I:C). 1. Harvest TLR3/ISRE – HEK293 cells and seed cells into a white solid-bottom 96-well microplate in 100 µl of growth medium at 5×10^4 cells/well. 2. Incubate cells at 37°C in a CO₂ incubator for overnight. 3. The next day, stimulate cells with various concentrations of poly (I:C). 4. Incubate at 37°C in a CO₂ incubator for 6-16 hours. 5. Add 50 µl of luciferase assay reagent per well. 6. Incubate at room temperature for 1-5 minutes and measure luminescence using a microplate luminometer.

TLR3/ISRE Luciferase Reporter-HEK293 Cell Line (RC1023) Images

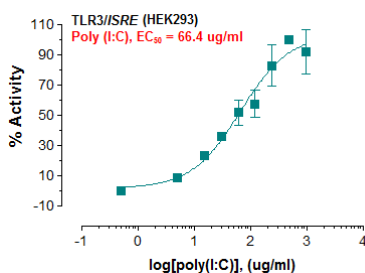


Fig-1: Induction of TLR3 activity by poly(I:C) in TLR3/ISRE HEK293 cells.

Submit a product review to Biocompare.com

Submit a review of this product to Biocompare.com to receive a \$20 Amazon giftcard! Your reviews help your fellow scientists make the right decisions. Thank you for your contribution.



TLR3/ISRE Luciferase Reporter-HEK293 Cell Line