

Anti-SMURF 2/SMURF2 Antibody

Catalog Number: RP1102

About SMURF2

E3 ubiquitin-protein ligase SMURF2 is an enzyme that in humans is encoded by the SMURF2 gene. The SMURF2 gene is mapped to chromosome 17q22-q23 based on sequence similarity between the SMURF2 sequence and a genomic contig. SMURF2 is a HECT domain E3 ubiquitin ligase involved in degradation of SMADs, TGF-beta receptor (TGFBR), and other substrates. It also functions in regulation of neuronal and planar cell polarity, induction of senescence, and tumor suppression

Overview

Product Name	Anti-SMURF 2/SMURF2 Antibody
Reactive Species	Human, Mouse, Rat
Description	Boster Bio Anti-SMURF 2/SMURF2 Antibody catalog # RP1102. Tested in WB applications. This antibody reacts with Human, Mouse, Rat.
Application	WB
Clonality	Polyclonal
Formulation	Each vial contains 5mg BSA, 0.9mg NaCl, 0.2mg Na2HPO4, 0.05mg NaN3.
Storage Instructions	Store at -20°C for one year from date of receipt. After reconstitution, at 4°C for one month. It can also be aliquotted and stored frozen at -20°C for six months. Avoid repeated freeze-thaw cycles.
Host	Rabbit
Uniprot ID	Q9HAU4

Technical Details

Immunogen	A synthetic peptide corresponding to a sequence in the middle region of human SMURF 2, identical to the related mouse sequence.
Predicted Reactive Species	Hamster
Recommended Detection Systems	Boster recommends Enhanced Chemiluminescent Kit with anti-Rabbit IgG (EK1002) for Western blot.
Cross Reactivity	No cross-reactivity with other proteins.
Isotype	Rabbit IgG
Form	Lyophilized
Concentration	Adding 0.2 ml of distilled water will yield a concentration of 500 ug/ml.

Purification	Immunogen affinity purified.
Suggested Dilutions	<p>Dilute the sample so that the expected range of concentrations fall within the detection range of this kit.</p> <p>If the expected range of concentration is unknown, a pilot test should be conducted to decide the optimal dilution ratio for your samples.</p> <p>Some PubMed article(s) citing the expression level of this target are as follows:</p> <p>Boster Bio's internal QC testing used:</p> <p>Western blot, 0.1-0.5ug/ml, Human, Mouse, Rat</p>

Anti-SMURF 2/SMURF2 Antibody (RP1102) Images

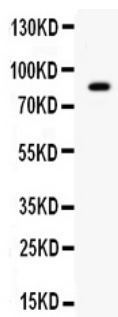


Figure 1. Western blot analysis of SMURF2 using anti-SMURF2 antibody (RP1102).

Electrophoresis was performed on a 5-20% SDS-PAGE gel at 70V (Stacking gel) / 90V (Resolving gel) for 2-3 hours. The sample well of each lane was loaded with 50ug of sample under reducing conditions.

Lane 1: SMMC whole cell lysates.

After Electrophoresis, proteins were transferred to a Nitrocellulose membrane at 150mA for 50-90 minutes. Blocked the membrane with 5% Non-fat Milk/ TBS for 1.5 hour at RT. The membrane was incubated with rabbit anti-SMURF2 antigen affinity purified polyclonal antibody (Catalog # RP1102) at 0.5 ug/mL overnight at 4°C, then washed with TBS-0.1%Tween 3 times with 5 minutes each and probed with a goat anti-rabbit IgG-HRP secondary antibody at a dilution of 1:10000 for 1.5 hour at RT. The signal is developed using an Enhanced Chemiluminescent detection (ECL) kit (Catalog # EK1002) with Tanon 5200 system. A specific band was detected for SMURF2 at approximately 86KD. The expected band size for SMURF2 is at 86KD.

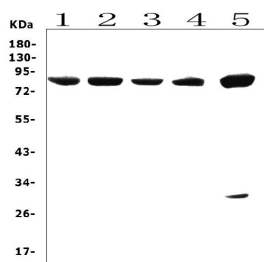


Figure 2. Western blot analysis of SMURF2 using anti-SMURF2 antibody (RP1102).

Electrophoresis was performed on a 5-20% SDS-PAGE gel at 70V (Stacking gel) / 90V (Resolving gel) for 2-3 hours. The sample well of each lane was loaded with 50ug of sample under reducing conditions.

Lane 1: rat testis tissue lysates,

Lane 2: rat pancreas tissue lysates,

Lane 3: rat stomach testis lysates,

Lane 4: mouse testis tissue lysates.

Lane 5: mouse pancreas tissue lysates.

After Electrophoresis, proteins were transferred to a Nitrocellulose membrane at 150mA for 50-90 minutes. Blocked the membrane with 5% Non-fat Milk/ TBS for 1.5 hour at RT. The membrane was incubated with rabbit anti-SMURF2 antigen affinity purified polyclonal antibody (Catalog # RP1102) at 0.5 ug/mL overnight at 4°C, then washed with TBS-0.1%Tween 3 times with 5 minutes each and probed with a goat anti-rabbit IgG-HRP secondary antibody at a dilution of 1:10000 for 1.5 hour at RT. The signal is developed using an Enhanced Chemiluminescent detection (ECL) kit (Catalog # EK1002) with Tanon 5200 system. A specific band was detected for SMURF2 at approximately 86KD. The expected band size for SMURF2 is at 86KD.

Submit a product review to Biocompare.com

Submit a review of this product to Biocompare.com to receive a \$20 Amazon.com giftcard! Your reviews help your fellow scientists make the right decisions. Thank you for your contribution.



Anti-SMURF 2/SMURF2 Antibody