

## Rabbit Anti-Human C-Reactive Protein Polyclonal Antibody

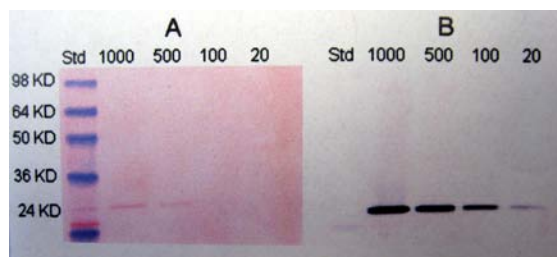
<b>CATALOG NUMBER:</b>	STA-140	<b>STORAGE:</b>	-20°C
<b>QUANTITY AND CONCENTRATION:</b>	100 µg of affinity purified antibody at 1 mg/mL in PBS, pH 7.2, containing 0.5 mM EDTA and 0.02% NaN <sub>3</sub>		
<b>SHELF LIFE:</b>	1 year from date of receipt under proper storage conditions; aliquot to avoid multiple freeze thaw cycles		
<b>HOST SPECIES:</b>	Rabbit		
<b>IMMUNOGEN:</b>	Purified human C-reactive protein		
<b>SPECIFICITY:</b>	Human C-reactive protein		
<b>APPLICATION:</b>	Immunoblot (1:200 to 1:160,000) ELISA (1:200 to 1:160,000)		

### **Background**

C-reactive protein (CRP) is an acute phase protein produced by the liver. It is a member of the pentraxin family of proteins with five identical nonglycosylated subunits of 206 amino acids each (24 kD). Among various markers of inflammation, CRP has been shown to exhibit the strongest association with cardiovascular events. Clinical studies demonstrated that coronary mortality among patients with unstable angina and elevated CRP is significantly higher compared to patients without elevated CRP.

### **Example of Results**

The following figures demonstrate typical results. One should use the data below for reference only. This data should not be used to interpret actual results.



**Figure 1. Immunoblot of Human C-Reactive Protein. A:** Ponceau S staining. **B:** Immunoblot using Goat Anti-Human CRP Polyclonal Antibody at 1:1000 dilution, followed by HRP-conjugated secondary antibody.

### **Warranty**

These products are warranted to perform as described in their labeling and in Cell Biolabs literature when used in accordance with their instructions. THERE ARE NO WARRANTIES THAT EXTEND BEYOND THIS EXPRESSED WARRANTY AND CELL BIOLABS DISCLAIMS ANY IMPLIED WARRANTY OF MERCHANTABILITY OR WARRANTY OF FITNESS FOR PARTICULAR PURPOSE. CELL BIOLABS's sole obligation and purchaser's exclusive remedy for breach of

this warranty shall be, at the option of CELL BIOLABS, to repair or replace the products. In no event shall CELL BIOLABS be liable for any proximate, incidental or consequential damages in connection with the products.

***This product is for RESEARCH USE ONLY; not for use in diagnostic procedures.***

**Contact Information**

Cell Biolabs, Inc.  
7758 Arjons Drive  
San Diego, CA 92126  
Worldwide: +1 858-271-6500  
USA Toll-Free: 1-888-CBL-0505  
E-mail: [tech@cellbiolabs.com](mailto:tech@cellbiolabs.com)  
[www.cellbiolabs.com](http://www.cellbiolabs.com)

©2011: Cell Biolabs, Inc. - All rights reserved. No part of these works may be reproduced in any form without permissions in writing.