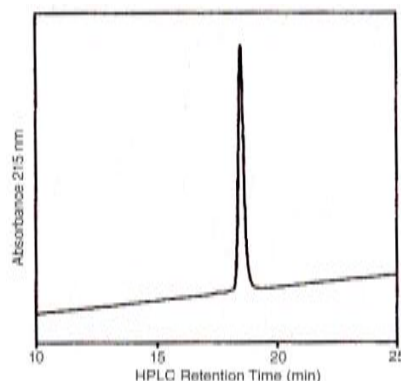


IGF2

Recombinant Human IGF-II, Mono-biotinylated, Receptor Grade

Catalog No.	AMU010 AMU050	Quantity:	10 µg 50 µg
Alternate Names:	Insulin-like growth factor-2, IGF-2, Somatomedin A, INSIGF, MSA, Peg2, PP1446, pp9974, RNIGF2, GRDF, PP9974, C11orf43		
Description:	Recombinant Human Mono-biotinylated Insulin-like Growth Factor 2 (IGF-II) is a member of the insulin family of polypeptide growth factors, which are involved in development and growth.		
Gene ID:	3481		
Molecular Weight:	7.697 kDa		
Formulation:	Lyophilized from Acetonitrile / 0.1% TFA		
Purity:	>95.0% as determined by HPLC analysis		
Biological Activity:	Western ligand blot to bovine IGFBP-2.		
Reconstitution:	See supplied protocol "Handling of IGF Analogs"		
Storage & Stability:	See supplied protocol "Handling of IGF Analogs"		

Reverse-phase, C₄ 2.1 mm x 10 cm column. Linear gradient 15-45% acetonitrile in water, 0.1% trifluoroacetic acid.



NOT FOR HUMAN USE. FOR RESEARCH ONLY. NOT FOR DIAGNOSTIC OR THERAPEUTIC USE.