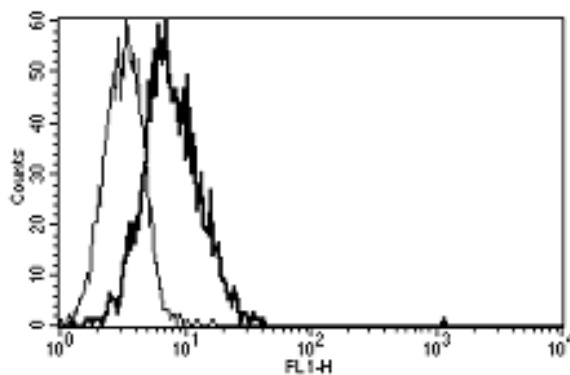


IL6R

Mouse Anti-Human IL-6R (Clone B-N12) FITC mAb

Catalog No.	CDM011	Quantity:	100 tests
Alternate Names:	IL6R, CD126, IL-6R-1, IL-6R-alpha, IL6RA, gp80		
Description:	The monoclonal antibody recognizes human IL-6 receptor alpha. IL-6 is a potent pleiotropic cytokine that regulates cell growth and differentiation and plays an important role in the immune response. The IL-6 receptor is a protein complex consisting of this protein and IL-6 signal transducer (IL6ST/GP130/IL6-beta), a receptor subunit also shared by many other cytokines.		
Gene ID:	3570		
Concentration:	100 tests / 1 ml		
Conjugate:	FITC		
Specificity:	Recognizes soluble and membrane bound IL-6 Receptor alpha subunit, a 80 kDa protein		
Host:	Mouse		
Isotype:	IgG1		
Immunogen:	gp80-transfected CHO cell line		
Clone:	B-N12		
Formulation:	Liquid in PBS + 5% BSA + 0.1% sodium azide. Precaution: Sodium azide is a poisonous and hazardous substance which should be handled by trained staff only.		
Purification:	Ion exchange chromatography		
Applications:	Flow Cytometry		
Application Notes:	Use 10 µl to label 10 ⁶ cells or 100 µl of whole blood. The optimal concentration should be determined by the user for each specific application.		
Storage & Stability:	Stable for 1 year at 2-8°C. For longer storage freeze in working aliquots at -20°C to -80°C. Avoid repeated freeze-thaw cycles.		

A typical staining pattern with Clone B-N12 FITC labeled on monocytes.



NOT FOR HUMAN USE. FOR RESEARCH ONLY. NOT FOR DIAGNOSTIC OR THERAPEUTIC USE.