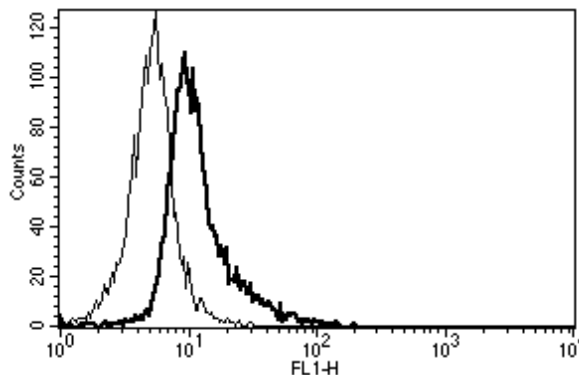


## IL6ST

### Mouse Anti-Human IL-6ST (Clone B-R3) FITC mAb

<b>Catalog No.</b>	CDM013	<b>Quantity:</b>	100 tests
<b>Alternate Names:</b>	IL-6 Signal Transducer, CD130, CDW130, GP130, IL-6RB		
<b>Description:</b>	The monoclonal antibody recognizes human CD130, also known as Interleukin 6 Signal Transducer or gp130. IL-6ST is a signal transducer shared by many cytokines, including interleukin 6 (IL-6), ciliary neurotrophic factor (CNTF), leukemia inhibitory factor (LIF), and oncostatin M (OSM). The protein functions as a part of the cytokine receptor complex and its activation is dependent upon the binding of cytokines to their receptors.		
<b>Gene ID:</b>	3572		
<b>Concentration:</b>	100 tests / ml		
<b>Conjugate:</b>	FITC		
<b>Specificity:</b>	Recognizes gp130, common subunit for IL-6, IL-11, OSM, LIF, CNTF, CT-1 receptors, a 130-140 kDa protein. Recognizes the soluble antigen.		
<b>Host:</b>	Mouse		
<b>Isotype:</b>	IgG2a		
<b>Immunogen:</b>	Natural soluble gp130		
<b>Clone:</b>	B-R3		
<b>Formulation:</b>	Liquid in PBS + 5% BSA and 0.09% sodium azide. Precaution: Sodium azide is a poisonous and hazardous substance which should be handled by trained staff only.		
<b>Purification:</b>	Ion exchange chromatography		
<b>Applications:</b>	Flow Cytometry		
<b>Application Notes:</b>	Use 10 µl to label 10 <sup>6</sup> cells or 100 µl of whole blood.		
<b>Storage &amp; Stability:</b>	Store at 2-8°C for 12 months. For longer storage, freeze aliquots at -20°C. <b>Avoid repeated freeze-thaw cycles.</b>		

A typical staining pattern with the B-R3 monoclonal antibody of Eahy 926 cell line



NOT FOR HUMAN USE. FOR RESEARCH ONLY. NOT FOR DIAGNOSTIC OR THERAPEUTIC USE.



**Cell Sciences®**  
65 Parker Street  
Unit 11  
Newburyport, MA 01950

Toll Free: 888-769-1246  
Phone: 978-572-1070  
Fax: 978-992-0298

E-mail: [info@cellsciences.com](mailto:info@cellsciences.com)  
Website: [www.cellsciences.com](http://www.cellsciences.com)