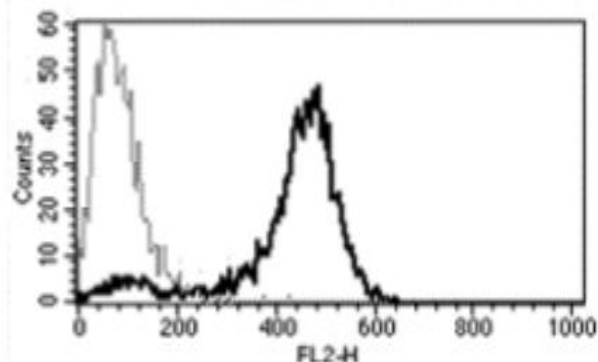


IL13RA2

Mouse Anti-Human IL-13R alpha 2 (Clone B-D13) PE mAb

Catalog No.	CDM021	Quantity:	100 tests
Alternate Names:	Interleukin 13 receptor alpha 2, CD213A2, CT19, IL-13R, IL13BP		
Description:	The monoclonal antibody recognizes human IL-13 receptor alpha 2 (IL-13R α 2) which is closely related to IL-13R α 1, a subunit of the IL-13 receptor complex. IL-13R α 2 binds IL-13 with high affinity, but lacks a cytoplasmic domain, and does not appear to function as a signal mediator. It is reported to play a role in the internalization of IL-13.		
Gene ID:	3598		
Conjugate:	PE		
Specificity:	Recognizes human IL-13 R α 2, a 44 kDa protein. Recognizes soluble antigen.		
Host:	Mouse		
Isotype:	IgG1		
Immunogen:	IL-13R α 2 transfected CHO cell line		
Clone:	B-D13		
Formulation:	Lyophilized from PBS with 5% BSA and 0.09% sodium azide. Precaution: Sodium azide is a poisonous and hazardous substance which should be handled by trained staff only.		
Purification:	Ion exchange chromatography		
Reconstitution:	Centrifuge vial prior to opening. Reconstitute with 1 ml of deionized water.		
Applications:	Flow Cytometry		
Application Notes:	Use 10 μ l to label 10 ⁶ cells or 100 μ l of whole blood. The optimal concentration should be determined by the user for each specific application.		
Storage & Stability:	Stable at 2-8°C for six months after reconstitution. DO NOT FREEZE.		

Staining of IL-13R alpha 2 transfected cells with monoclonal antibody clone B-D13



NOT FOR HUMAN USE. FOR RESEARCH ONLY. NOT FOR DIAGNOSTIC OR THERAPEUTIC USE.