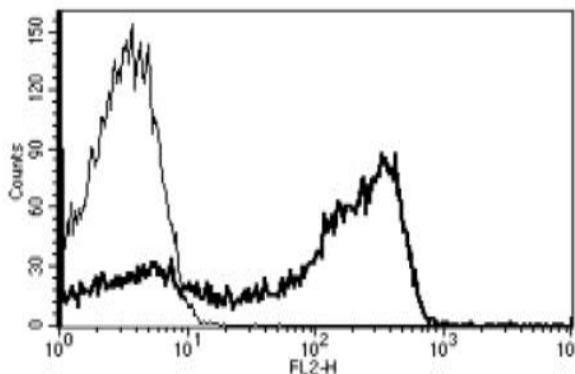


CD2

Mouse Anti-Human CD2/LFA-2 (Clone B-E2) Biotin mAb

Catalog No.	CDM026	Quantity:	100 tests
Alternate Names:	SRBC, T11		
Description:	The monoclonal antibody recognizes human CD2, a surface antigen of the human T-lymphocyte lineage that is expressed on all peripheral blood T cells. It is one of the earliest T-cell markers, being present on more than 95% of thymocytes; it is also found on some natural killer cells but not on B lymphocytes. Monoclonal antibodies directed against CD2 inhibit the formation of rosettes with sheep erythrocytes, indicating that CD2 is the erythrocyte receptor or is closely associated with it.		
Gene ID:	914		
Conjugate:	Biotin		
Specificity:	Recognizes the human Lymphocyte Function associated Antigen-2 (LFA-2), a 50 kDa protein.		
Host:	Mouse		
Isotype:	IgG2b		
Immunogen:	Human thymocytes		
Clone:	B-E2		
Formulation:	Lyophilized from PBS with 1% BSA and 0.09% sodium azide. Precaution: Sodium azide is a poisonous and hazardous substance, should be handled by trained staff .		
Purification:	Ion exchange chromatography		
Reconstitution:	Reconstitute with 1 ml sterile deionized water.		
Applications:	Flow Cytometry, Immunohistochemistry		
Application Notes:	Use 10 µl to label 10 ⁶ cells or 100 µl of whole blood. The optimal concentration should be determined by the user for each specific application.		
Storage & Stability:	Stable at 2-8°C for 6 months after reconstitution. For longer storage, freeze aliquots at -20 to -80°C. Avoid repeated freeze-thaw cycles.		

A typical staining pattern of lymphocytes with the anti-human CD2 clone B-E2 monoclonal antibody



cellsciences.com

NOT FOR HUMAN USE. FOR RESEARCH ONLY. NOT FOR DIAGNOSTIC OR THERAPEUTIC USE.



Cell Sciences®
65 Parker Street
Unit 11
Newburyport, MA 01950

Toll Free: 888-769-1246
Phone: 978-572-1070
Fax: 978-992-0298

E-mail: info@cellsciences.com
Website: www.cellsciences.com