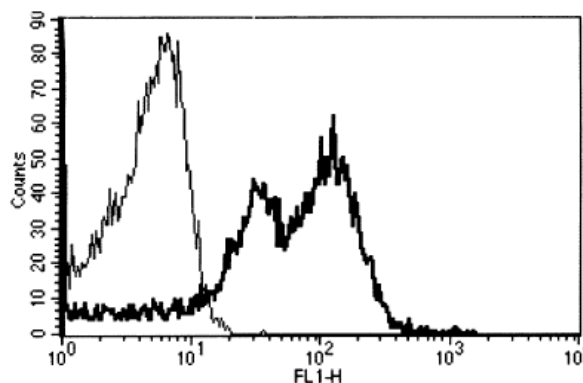


ITGB1

Mouse Anti-Human Integrin Beta 1/CD29 (Clone B-D15) mAb

Catalog No.	CDM034	Quantity:	200 tests
Alternate Names:	ITGB1, FNRB, GPIIA, MDF2, MSK12, VLA-BETA, VLAB		
Description:	The mouse monoclonal antibody recognizes human Integrin beta 1/CD29. Integrins are heterodimeric proteins made up of alpha and beta subunits. At least 18 alpha and 8 beta subunits have been described in mammals. Integrin family members are membrane receptors involved in cell adhesion and recognition in a variety of processes including embryogenesis, hemostasis, tissue repair, immune response and metastatic diffusion of tumor cells.		
Gene ID:	3688		
Concentration:	100 tests/ml		
Conjugate:	Unconjugated		
Specificity:	Recognizes the GPIIa, integrin b1, VLA-b chain, a 130 kDa protein		
Host:	Mouse		
Isotype:	IgG2a		
Immunogen:	U937 cell line		
Clone:	B-D15		
Formulation:	Liquid in PBS + 1 % BSA + 0.1 % sodium azide.		
Applications:	Flow Cytometry, Immunohistochemistry		
Application Notes:	Use 10 μ l to label 10^6 cells or 100 μ l of whole blood. The optimal concentration should be determined by the user for each specific application.		
Storage & Stability:	Stable for 1 year at 2-8°C. For longer storage, freeze aliquots at -20 to -80°C. Avoid repeated freeze-thaw cycles.		

A typical staining pattern with the B-D15 monoclonal antibody of lymphocytes



NOT FOR HUMAN USE. FOR RESEARCH ONLY. NOT FOR DIAGNOSTIC OR THERAPEUTIC USE.



Cell Sciences®
65 Parker Street
Unit 11
Newburyport, MA 01950

Toll Free: 888-769-1246
Phone: 978-572-1070
Fax: 978-992-0298

E-mail: info@cellsciences.com
Website: www.cellsciences.com