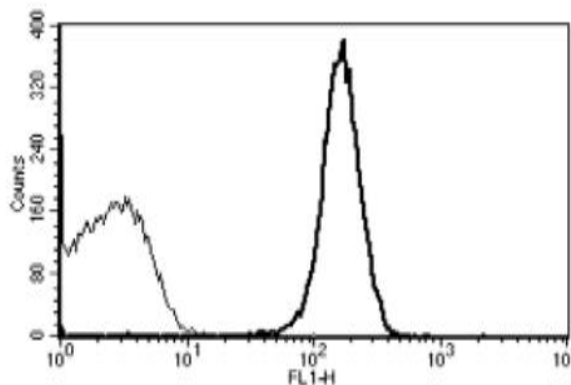


## PECAM1

### Mouse Anti-Human PECAM-1 Clone B-B38 Azide Free mAb

<b>Catalog No.</b>	CDM035	<b>Quantity:</b>	200 µg
<b>Alternate Names:</b>	Platelet Endothelial Cell Adhesion Molecule - 1, CD31, PECAM-1, PECAM1		
<b>Description:</b>	Mouse anti-Human CD31/PECAM-1 monoclonal antibody, clone B-B38, Azide Free. CD31/PECAM-1 is found on the surface of platelets, monocytes, neutrophils, and some types of T-cells, and makes up a large portion of endothelial cell intercellular junctions. The protein is a member of the immunoglobulin superfamily and is likely involved in leukocyte migration, angiogenesis, and integrin activation.		
<b>Concentration:</b>	200 µg / 200 µl		
<b>Gene ID:</b>	5175		
<b>Hybridoma:</b>	Myeloma X63/AG.8653 x BALB/c spleen cells		
<b>Specificity:</b>	Recognises CD31/PECAM-1, a 130-140 kDa protein		
<b>Host:</b>	Mouse		
<b>Immunogen:</b>	Recombinant Human CD31/PECAM-1		
<b>Isotype:</b>	IgG1		
<b>Clone:</b>	B-B38		
<b>Formulation:</b>	PBS. Sterile-filtered through 0.22 µm filter. No preservatives and carrier-free.		
<b>Purification:</b>	Ion exchange chromatography		
<b>Applications:</b>	Flow cytometry. Recognizes the soluble antigen.		
<b>Application Notes:</b>	Use 10 µl to label 10 <sup>6</sup> cells or 100 µl of whole blood		
<b>Storage &amp; Stability:</b>	Store at 2-4°C. Stable for 1 year. For longer storage, aliquot and freeze at -80°C. <b>Avoid repeated freeze-thaw cycles.</b>		

A typical staining pattern with the B-B38 monoclonal antibody of platelets



NOT FOR HUMAN USE. FOR RESEARCH ONLY. NOT FOR DIAGNOSTIC OR THERAPEUTIC USE.