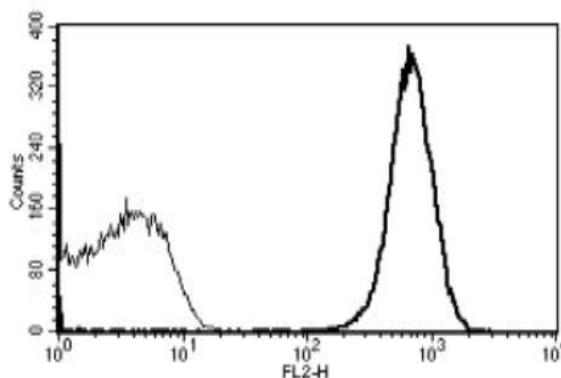


PECAM1

Mouse Anti-Human PECAM-1 Clone B-B38 PE mAb

Catalog No.	CDM037	Quantity:	100 tablets
Alternate Names:	Platelet Endothelial Cell Adhesion Molecule - 1, CD31, PECAM-1, PECAM1		
Description:	PE conjugated Mouse anti-Human CD31/PECAM-1 monoclonal antibody, clone B-B38. CD31/PECAM-1 is found on the surface of platelets, monocytes, neutrophils, and some types of T-cells, and makes up a large portion of endothelial cell intercellular junctions. The protein is a member of the immunoglobulin superfamily and is likely involved in leukocyte migration, angiogenesis, and integrin activation.		
Gene ID:	5175		
Hybridoma:	Myeloma X63/AG.8653 x Balb/c spleen cells		
Specificity:	Recognises Platelet Endothelial Cell Adhesion Molecule - 1 (CD31/PECAM-1), a 130-140 kDa protein		
Host:	Mouse		
Immunogen:	Recombinant Human CD31/PECAM-1		
Isotype:	IgG1		
Clone:	B-B38		
Conjugate:	PE		
Formulation:	PBS + 1% BSA + 0.1% sodium azide.		
Purification:	Ion exchange chromatography		
Reconstitution:	Reconstitute with 1 ml deionized water.		
Applications:	Flow cytometry.		
Application Notes:	Use 10 µl to label 10 ⁶ cells or 100 µl of whole blood		
Storage & Stability:	Store at 2-4°C. Stable for 6 months after reconstitution. Do Not Freeze.		

A typical staining pattern with the B-B38 monoclonal antibody of platelets



NOT FOR HUMAN USE. FOR RESEARCH ONLY. NOT FOR DIAGNOSTIC OR THERAPEUTIC USE.



Cell Sciences®
65 Parker Street
Unit 11
Newburyport, MA 01950

Toll Free: 888-769-1246
Phone: 978-572-1070
Fax: 978-992-0298

E-mail: info@cellsciences.com
Website: www.cellsciences.com