

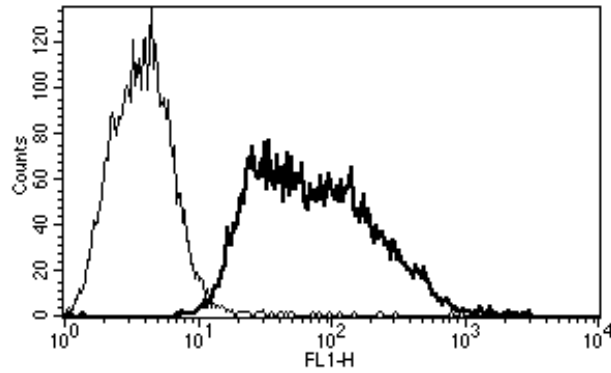
SELE

Mouse Anti-Human E-Selectin/CD62E (Clone B-P7) Azide Free mAb

Catalog No.	CDM049	Quantity:	200 µg
Alternate Names:	ELAM, ELAM1, ESEL, LECAM2		
Description:	The mouse monoclonal antibody recognizes E-Selectin, also known as CD62E, which is found on cytokine-stimulated endothelial cells and is thought to be responsible for the accumulation of blood leukocytes at sites of inflammation by mediating the adhesion of cells to the vascular lining. It exhibits structural features such as the presence of lectin- and EGF-like domains followed by short consensus repeat (SCR) domains that contain 6 conserved cysteine residues. These proteins are part of the selectin family of cell adhesion molecules.		
Gene ID:	6401		
UniProtKB:	P16581		
Concentration:	1.0 mg/mL		
Conjugate:	Unconjugated		
Specificity:	Recognizes ELAM-1/ E-selectin/ CD62E, a 97 kDa protein. Recognizes the soluble antigen.		
Host:	Mouse		
Isotype:	IgG1		
Immunogen:	Activated human endothelial cells		
Clone:	B-P7		
Formulation:	Liquid in PBS, sterile filtered. Carrier and preservative free.		
Applications:	Flow Cytometry. NOT suitable for Immunoprecipitation.		
Application Notes:	The optimal concentration should be determined by the user for each specific application.		
Storage & Stability:	Store at 2-8 °C for 1 year. For longer storage, freeze aliquots at -20 °C. Avoid repeated freeze-thaw cycles.		

A typical staining pattern with the B-P7 monoclonal antibody of ELAM-1 transfected CHO cell line.





NOT FOR HUMAN USE. FOR RESEARCH ONLY. NOT FOR DIAGNOSTIC OR THERAPEUTIC USE.



Cell Sciences®
65 Parker Street
Unit 11
Newburyport, MA 01950

Toll Free: 888-769-1246
Phone: 978-572-1070
Fax: 978-992-0298

E-mail: info@cellsciences.com
Website: www.cellsciences.com