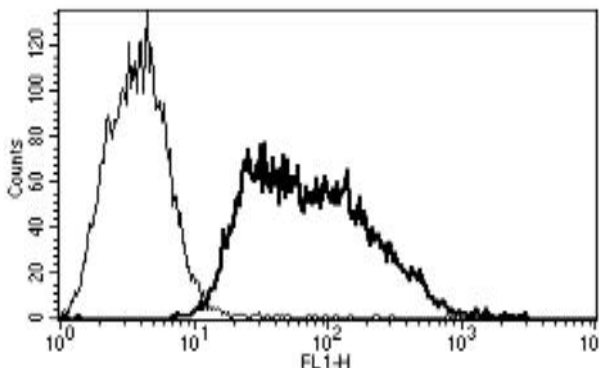


SELE

Mouse Anti-Human E-Selectin/CD62E (Clone B-P7) mAb

Catalog No.	CDM050	Quantity:	200 tests
Alternate Names:	ELAM, ELAM1, ESEL, LECAM2		
Description:	The mouse monoclonal antibody recognizes E-Selectin, also known as CD62E, which is found on cytokine-stimulated endothelial cells and is thought to be responsible for the accumulation of blood leukocytes at sites of inflammation by mediating the adhesion of cells to the vascular lining. It exhibits structural features such as the presence of lectin- and EGF-like domains followed by short consensus repeat (SCR) domains that contain 6 conserved cysteine residues. These proteins are part of the selectin family of cell adhesion molecules.		
Gene ID:	6401		
Concentration:	100 tests/ml		
Conjugate:	Unconjugated		
Specificity:	Recognizes ELAM-1/ E-selectin/ CD62E, a 97 kDa protein. Recognizes the soluble antigen.		
Host:	Mouse		
Isotype:	IgG1		
Immunogen:	Activated human endothelial cells		
Clone:	B-P7		
Formulation:	Liquid in PBS +1 % BSA + 0.09 % sodium azide.		
Applications:	Flow Cytometry. NOT suitable for Immunoprecipitation.		
Application Notes:	Use 10 µl to label 10 ⁶ cells or 100 µl of whole blood. The optimal concentration should be determined by the user for each specific application.		
Storage & Stability:	Store at 2-8°C for 1 year. For longer storage, freeze aliquots at -20 to -80°C. Avoid repeated freeze-thaw cycles.		

A typical staining pattern with the B-P7 monoclonal antibody of ELAM-1 transfected CHO cell line.



NOT FOR HUMAN USE. FOR RESEARCH ONLY. NOT FOR DIAGNOSTIC OR THERAPEUTIC USE.



Cell Sciences®
65 Parker Street
Unit 11
Newburyport, MA 01950

Toll Free: 888-769-1246
Phone: 978-572-1070
Fax: 978-992-0298

E-mail: info@cellsciences.com
Website: www.cellsciences.com

cellsciences.com



Cell Sciences®
65 Parker Street
Unit 11
Newburyport, MA 01950

Toll Free: 888-769-1246
Phone: 978-572-1070
Fax: 978-992-0298

E-mail: info@cellsciences.com
Website: www.cellsciences.com