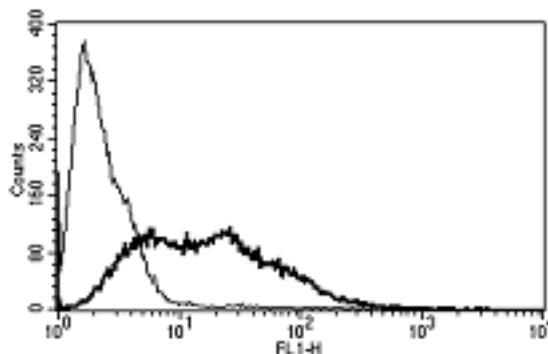


VCAM1

Mouse Anti-Human VCAM1/CD106 (Clone B-K9) mAb

| | | | |
|---------------------------------|---|------------------|-----------|
| Catalog No. | CDM055 | Quantity: | 200 tests |
| Alternate Names: | Vascular Cell Adhesion Molecule 1, INCAM-100 | | |
| Description: | The mouse monoclonal antibody recognizes human Vascular Cell Adhesion Molecule 1 (VCAM1/CD106), a member of the Ig superfamily. VCAM1 is a cell surface sialoglycoprotein expressed by cytokine-activated endothelium. This type I membrane protein mediates leukocyte-endothelial cell adhesion and signal transduction, and may play a role in the development of atherosclerosis and rheumatoid arthritis. | | |
| Gene ID: | 7412 | | |
| Concentration: | 100 tests/ml | | |
| Conjugate: | Unconjugated | | |
| Specificity: | Recognizes the Vascular Cell Adhesion Molecule-1 (VCAM-1), a 110 kDa protein. Recognizes the soluble antigen. | | |
| Host: | Mouse | | |
| Isotype: | IgG1 | | |
| Immunogen: | Activated human umbilical vein endothelial cells | | |
| Clone: | B-K9 | | |
| Formulation: | Liquid in PBS + 1% BSA + 0.1% sodium azide. | | |
| Applications: | Flow Cytometry. Not suitable for Immunoprecipitation. | | |
| Application Notes: | Use 10 µl to label 10 ⁶ cells or 100 µl of whole blood. The optimal concentration should be determined by the user for each specific application. | | |
| Storage & Stability: | Stable at 2-8°C for 1 year. For longer storage, freeze aliquots at -20 to -80°C. Avoid repeated freeze-thaw cycles. | | |

A typical staining pattern with the B-K9 monoclonal antibody of VCAM-1 transfected CHO cell line.



NOT FOR HUMAN USE. FOR RESEARCH ONLY. NOT FOR DIAGNOSTIC OR THERAPEUTIC USE.



Cell Sciences®
65 Parker Street
Unit 11
Newburyport, MA 01950

Toll Free: 888-769-1246
Phone: 978-572-1070
Fax: 978-992-0298

E-mail: info@cellsciences.com
Website: www.cellsciences.com