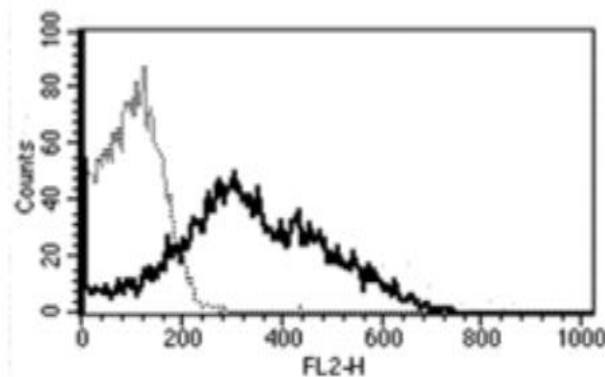


## SELL

### Mouse Anti-Human L-Selectin/ CD62L (Clone B-S13) PE mAb

<b>Catalog No.</b>	CDM057	<b>Quantity:</b>	100 tests
<b>Alternate Names:</b>	CD62L, LAM1, LECAM1, LEU8, LNHR, LSEL, LYAM1, PLNHR, TQ1		
<b>Description:</b>	The mouse monoclonal antibody recognizes L-Selectin/CD62L, a cell surface adhesion molecule that belongs to a family of adhesion/homing receptors. It plays a role in the migration of lymphocytes into peripheral lymph nodes and sites of chronic inflammation, and of neutrophils into acute inflammatory sites.		
<b>Gene ID:</b>	6402		
<b>Conjugate:</b>	PE		
<b>Specificity:</b>	Recognizes L-selectin/ CD62L, the Leucocyte Endothelial Cell Adhesion Molecule-1 (LECAM-1), a 74-95 kDa protein.		
<b>Host:</b>	Mouse		
<b>Isotype:</b>	IgG1		
<b>Immunogen:</b>	CD62L transfected CHO cell line		
<b>Clone:</b>	B-S13		
<b>Formulation:</b>	Lyophilized in PBS + 1% BSA + 0.1% sodium azide.		
<b>Reconstitution:</b>	<b>Centrifuge vial prior to opening.</b> Reconstitute with 1 ml deionized water.		
<b>Applications:</b>	Flow Cytometry		
<b>Application Notes:</b>	Use 10 µl to label 10 <sup>6</sup> cells or 100 µl of whole blood. The optimal concentration should be determined by the user for each specific application.		
<b>Storage &amp; Stability:</b>	Store at 2-8°C for 6 months after reconstitution. <b>Do Not Freeze.</b>		

A typical staining pattern with the B-S13 monoclonal antibody of PBL



NOT FOR HUMAN USE. FOR RESEARCH ONLY. NOT FOR DIAGNOSTIC OR THERAPEUTIC USE.



**Cell Sciences®**  
65 Parker Street  
Unit 11  
Newburyport, MA 01950

Toll Free: 888-769-1246  
Phone: 978-572-1070  
Fax: 978-992-0298

E-mail: [info@cellsciences.com](mailto:info@cellsciences.com)  
Website: [www.cellsciences.com](http://www.cellsciences.com)