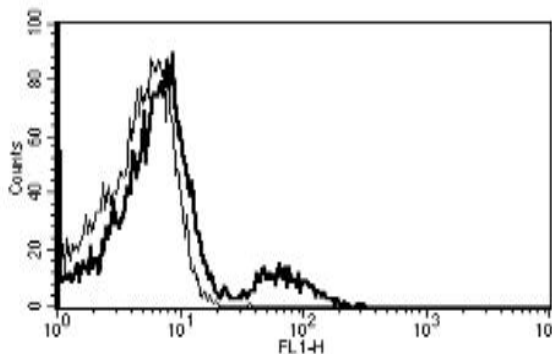


CD1B, CD1C

Mouse Anti-Human CD1b/c Clone B-B5 FITC mAb

Catalog No.	CDM125	Quantity:	100 tests
Alternate Names:	CD1B, CD1C, CD1		
Description:	Mouse Anti-Human CD1b/c Clone B-B5 mAb. The CD1b/c proteins are members of the CD1 family of transmembrane glycoproteins, which are structurally related to the major histocompatibility complex (MHC) proteins and form heterodimers with beta-2-microglobulin.		
Concentration:	200 tests / 2 ml		
Gene ID:	910, 911		
Hybridoma:	Myeloma X63/AG.8653 x Balb/c spleen cells		
Specificity:	Recognises a 43-45 kDa protein		
Host:	Mouse		
Immunogen:	Thymus cells and Jurkat cell line		
Isotype:	IgG1		
Clone:	B-B5		
Conjugate:	FITC		
Formulation:	PBS + 1% BSA + 0.1% sodium azide		
Purification:	Ion exchange chromatography		
Applications:	Flow Cytometry. Use 10 µl to label 10 ⁶ cells or 100 µl of whole blood		
Storage & Stability:	Store at 2-4°C for 1 year. For longer storage, aliquot and freeze at -80°C. Avoid repeated freeze-thaw cycles.		

A typical staining pattern with the Anti-Human CD1b,c Clone B-B5 monoclonal antibody of Molt 4 cell line



NOT FOR HUMAN USE. FOR RESEARCH ONLY. NOT FOR DIAGNOSTIC OR THERAPEUTIC USE.

cellsciences.com



Cell Sciences®
65 Parker Street
Unit 11
Newburyport, MA 01950

Toll Free: 888-769-1246
Phone: 978-572-1070
Fax: 978-992-0298

E-mail: info@cellsciences.com
Website: www.cellsciences.com