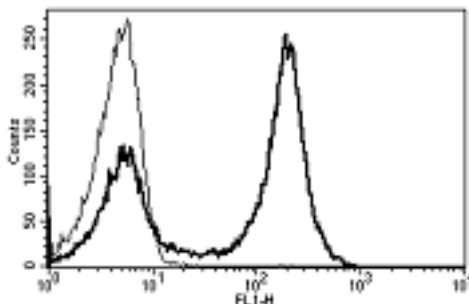


CD5

Mouse Anti-Human CD5 (Clone B-B8) mAb

Catalog No.	CDM133	Quantity:	200 tests
Alternate Names:	T1, lymphocyte antigen T1/Leu-1, LEU1, CD5		
Description:	The mouse monoclonal antibody recognizes human CD5, a glycoprotein expressed on thymocytes, T cells and, at lower levels, on the IgM-secreting B-1 subpopulation of B cells. B-1 cells have limited diversity of their B-cell receptor due to their lack of the enzyme terminal deoxynucleotidyl transferase (TdT) and are potentially self-reactive. CD5 is upregulated on T cells upon strong activation. In the thymus, there is a correlation with CD5 expression and strength of the interaction of the T cell towards self-peptides. CD5 binds the C-type lectin, CD72, and modulates signaling through the antigen receptors on T and B cells.		
Gene ID:	921		
Concentration:	100 tests/ml		
Conjugate:	Unconjugated		
Specificity:	Recognizes a 67 kDa protein.		
Host:	Mouse		
Isotype:	IgG1		
Immunogen:	PHA activated T cells		
Clone:	B-B8		
Formulation:	Liquid in PBS + 1% BSA + 0.09% sodium azide. Precaution: Sodium azide is a poisonous and hazardous substance which should be handled by trained staff only.		
Applications:	Flow Cytometry, Immunohistochemistry		
Application Notes:	FC: Use 10 µl to label 10 ⁶ cells or 100 µl of whole blood. IHC: recommended dilution 1:50.		
Storage & Stability:	Store at 2-8°C for 1 year. For longer storage, aliquot and freeze at -20 to -80°C. Avoid repeated freeze-thaw cycles.		

A typical staining pattern of lymphocytes with the B-B8 monoclonal antibody.



NOT FOR HUMAN USE. FOR RESEARCH ONLY. NOT FOR DIAGNOSTIC OR THERAPEUTIC USE.

