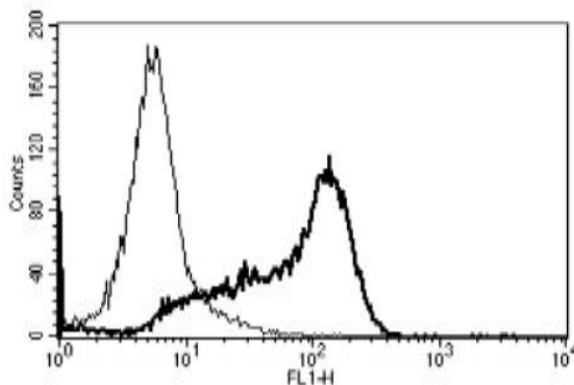


## CD6

### Mouse Anti-Human CD6 Clone B-F3 mAb

<b>Catalog No.</b>	CDM136	<b>Quantity:</b>	200 tests
<b>Alternate Names:</b>	TP120, CD6		
<b>Description:</b>	<p>Mouse monoclonal antibody Clone B-F3 against Human CD6.</p> <p>CD6 is a monomeric 105- or 130-kD membrane glycoprotein that is involved in T-cell activation. The size difference between the 2 CD6 forms is due to differences in phosphorylation.</p>		
<b>Concentration:</b>	200 tests / 2 ml		
<b>Gene ID:</b>	923		
<b>Hybridoma:</b>	Myeloma X63/AG.8653 x Balb/c spleen cells		
<b>Specificity:</b>	Recognises a 100-130 kDa protein		
<b>Host:</b>	Mouse		
<b>Immunogen:</b>	Chronic Lymphoid Leukemia cells (CLL)		
<b>Isotype:</b>	IgG1		
<b>Clone:</b>	B-F3		
<b>Formulation:</b>	PBS + 1% BSA + 0.1% sodium azide		
<b>Purification:</b>	Ion exchange chromatography		
<b>Applications:</b>	Flow Cytometry		
<b>Application Notes:</b>	Use 10 µl to label 10 <sup>6</sup> cells or 100 µl of whole blood		
<b>Storage &amp; Stability:</b>	Store at 2-4°C. Stable for 1 year. For longer storage, aliquot and freeze at -80°C. <b>Avoid repeated freeze-thaw cycles.</b>		

A typical staining pattern of lymphocytes with the B-F3 monoclonal antibody



# cellsciences.com

NOT FOR HUMAN USE. FOR RESEARCH ONLY. NOT FOR DIAGNOSTIC OR THERAPEUTIC USE.



**Cell Sciences®**  
65 Parker Street  
Unit 11  
Newburyport, MA 01950

Toll Free: 888-769-1246  
Phone: 978-572-1070  
Fax: 978-992-0298

E-mail: [info@cellsciences.com](mailto:info@cellsciences.com)  
Website: [www.cellsciences.com](http://www.cellsciences.com)