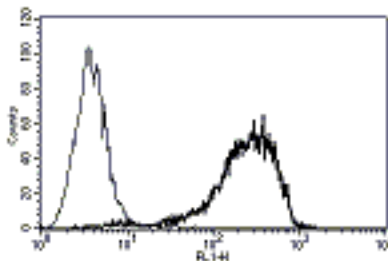


SDC1

Mouse Anti-Human Syndecan 1/CD138 (Clone B-A38) mAb

Catalog No.	CDM139	Quantity:	200 µg
Alternate Names:	CD138, SDC, SYND1, syndecan		
Description:	The mouse monoclonal antibody recognizes human syndecan 1. Syndecan 1 (SDC1/CD138) is a transmembrane heparan sulfate proteoglycan and a member of the syndecan proteoglycan family. Syndecans mediate cell binding, cell signaling, and cytoskeletal organization and syndecan receptors are required for internalization of the HIV-1 tat protein. SDC1/CD138 functions in cell proliferation, cell migration and cell-matrix interactions via its receptor for extracellular matrix proteins. Altered SDC1 expression has been detected in several different tumor types.		
Gene ID:	6382		
UniProtKB:	P18827		
Concentration:	1.0 mg/mL		
Conjugate:	Unconjugated		
Specificity:	Recognizes syndecan-1, the heparan sulfate proteoglycan with a MW of 65-70 kDa.		
Isotype:	IgG1		
Immunogen:	U266 cell line		
Clone:	B-A38		
Formulation:	Liquid in PBS, sterile filtered. Carrier and preservative free.		
Applications:	Flow Cytometry, Immunohistochemistry (IHC)		
Application Notes:	IHC: Recommended dilution 1:50. The optimal concentration should be determined by the user for each specific application.		
Storage & Stability:	Store at 2-8 °C for up to one year. For longer storage, freeze aliquots at -20 °C. Avoid repeated freeze-thaw cycles.		

A typical staining pattern with the B-A38 monoclonal antibody of U266 cell line.



NOT FOR HUMAN USE. FOR RESEARCH ONLY. NOT FOR DIAGNOSTIC OR THERAPEUTIC USE.

