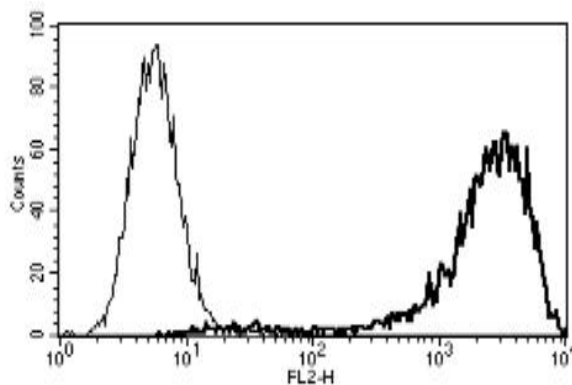


SDC1

Mouse Anti-Human Syndecan 1/CD138 (Clone B-A38) Biotin mAb

Catalog No.	CDM141	Quantity:	100 tests
Alternate Names:	CD138, SDC, SYND1, syndecan		
Description:	The monoclonal antibody recognizes human syndecan 1. Syndecan 1 (SDC1), also known as CD138, is a transmembrane (type I) heparan sulfate proteoglycan and a member of the syndecan proteoglycan family. The syndecans mediate cell binding, cell signaling, and cytoskeletal organization and syndecan receptors are required for internalization of the HIV-1 tat protein. SDC1/CD138 functions as an integral membrane protein and participates in cell proliferation, cell migration and cell-matrix interactions via its receptor for extracellular matrix proteins. Altered SDC1 expression has been detected in several different tumor types.		
Gene ID:	6382		
Conjugate:	Biotin		
Specificity:	Recognizes syndecan-1, the heparan sulfate proteoglycan with a MW of 65-70 kDa.		
Host:	Mouse		
Isotype:	IgG1		
Immunogen:	U266 cell line		
Clone:	B-A38		
Formulation:	Lyophilized from PBS + 5% BSA + 0.1% sodium azide.		
Reconstitution:	Centrifuge vial prior to opening. Reconstitute with 1 ml deionized water.		
Applications:	Flow Cytometry, Immunohistochemistry		
Application Notes:	FC: Use 10 μ l to label 10 ⁶ cells or 100 μ l of whole blood. The optimal concentration should be determined by the user for each specific application.		
Storage & Stability:	Stable for 6 months at 2-8°C after reconstitution. DO NOT FREEZE.		

A typical staining pattern with the B-A38 monoclonal antibody of U266 cell line.



cellsciences.com

NOT FOR HUMAN USE. FOR RESEARCH ONLY. NOT FOR DIAGNOSTIC OR THERAPEUTIC USE.



Cell Sciences®
65 Parker Street
Unit 11
Newburyport, MA 01950

Toll Free: 888-769-1246
Phone: 978-572-1070
Fax: 978-992-0298

E-mail: info@cellsciences.com
Website: www.cellsciences.com